

**LEGEND**  
 0 12" = 12" Ø TREE

- REVISIONS**
- ① 10" Ø DISCHARGE PIPE RELOCATED JUNE 17/63 V.D.
  - ② GATE CHAMBER DIMENSIONS CHANGED " 26/63 V.D.

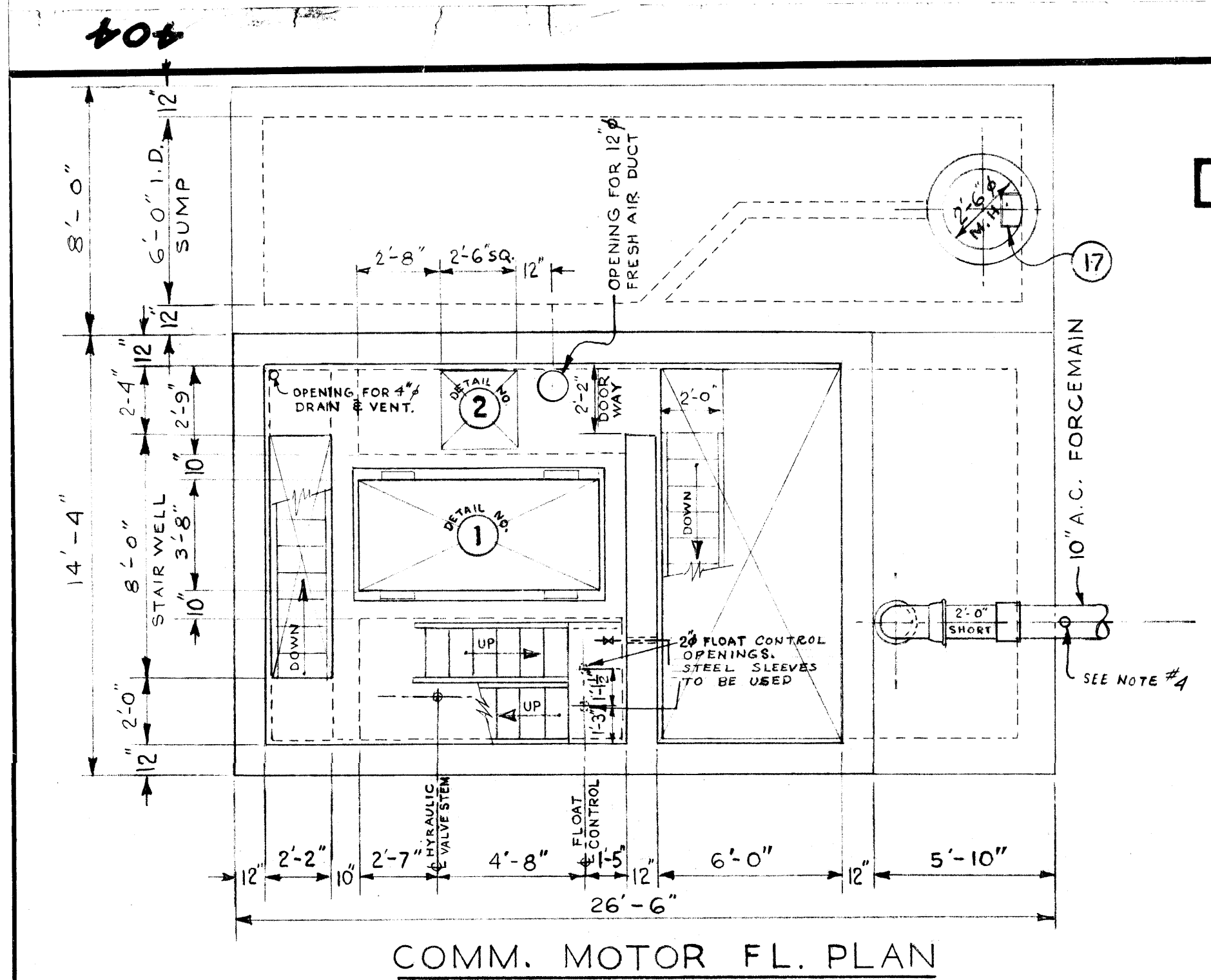
THE METROPOLITAN CORPORATION OF GREATER WPG			
WATERWORKS & WASTE DISPOSAL DIVISION			
SEWAGE DISPOSAL BRANCH			
<b>ST. JAMES INTERCEPTOR SITE PLAN CONWAY PUMPING STATION</b>			
APPROVED BY	DESIGNED BY	CHECKED BY	DWG. No. <b>S-267</b>
	DRAWN BY V.D	DATE 11/3/63	
SCALE'S 1" = 40'			

file # SP 10095

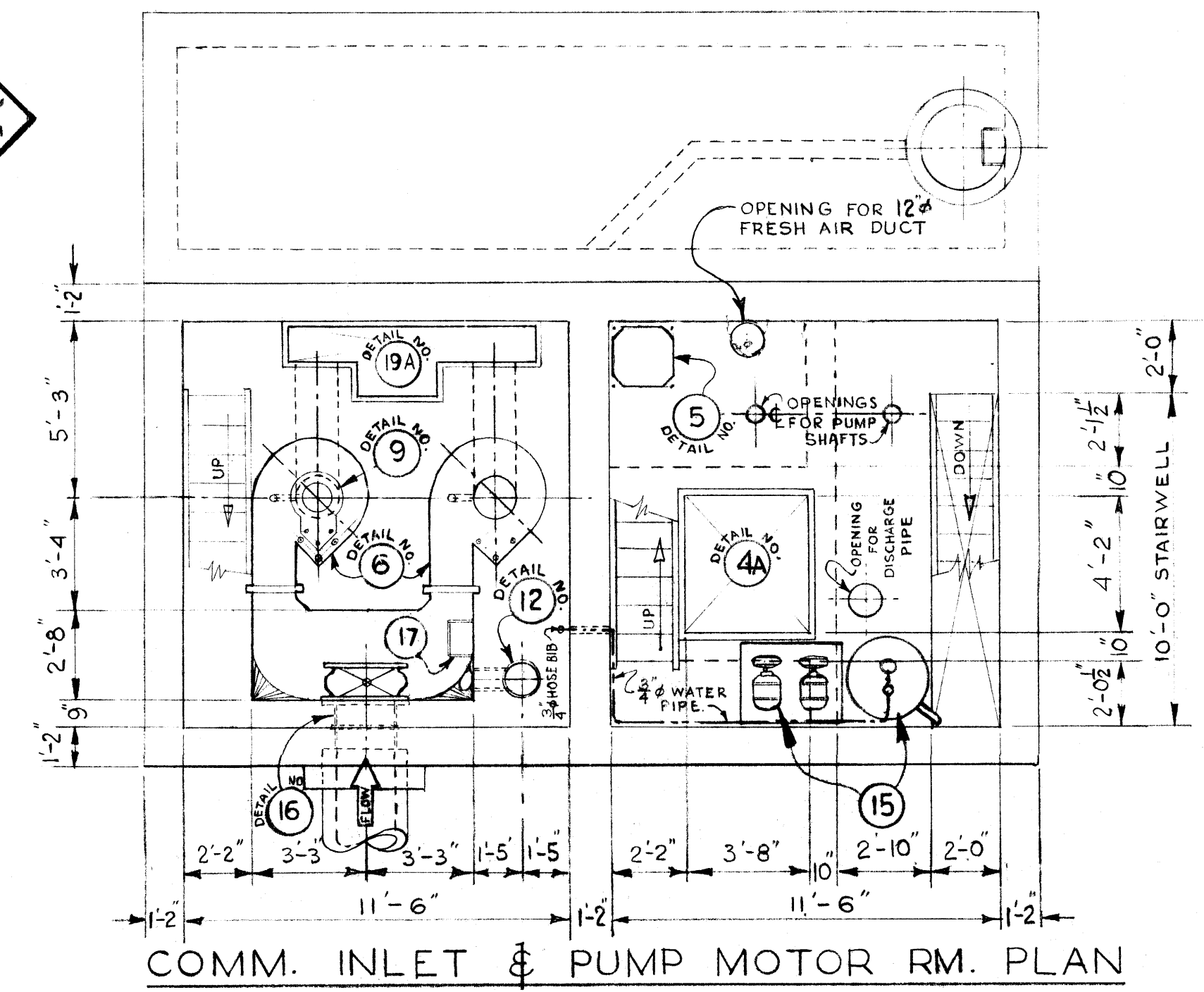
404

REF. or DRAWING No.

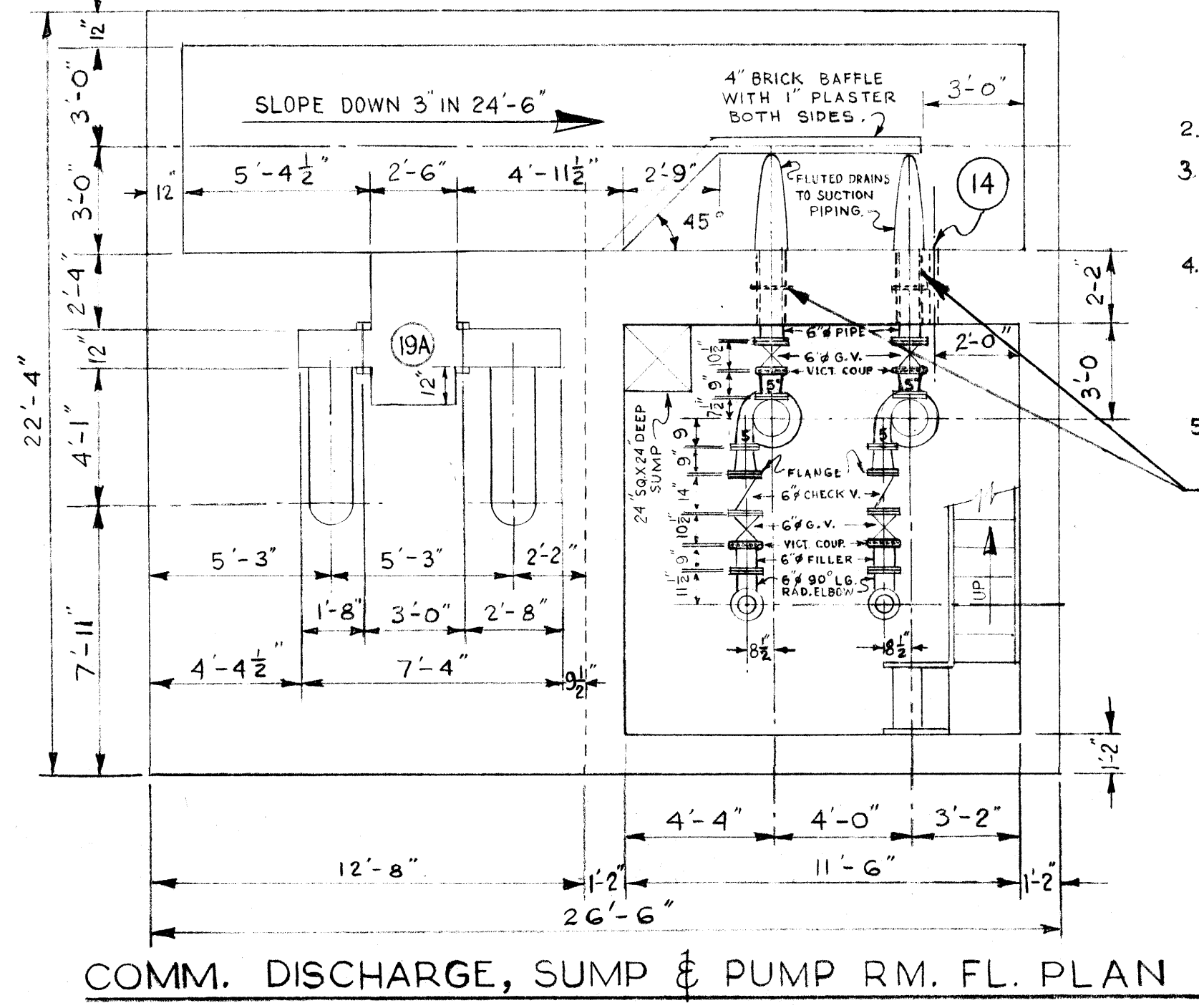
DETAILS



COMM. MOTOR FL. PLAN

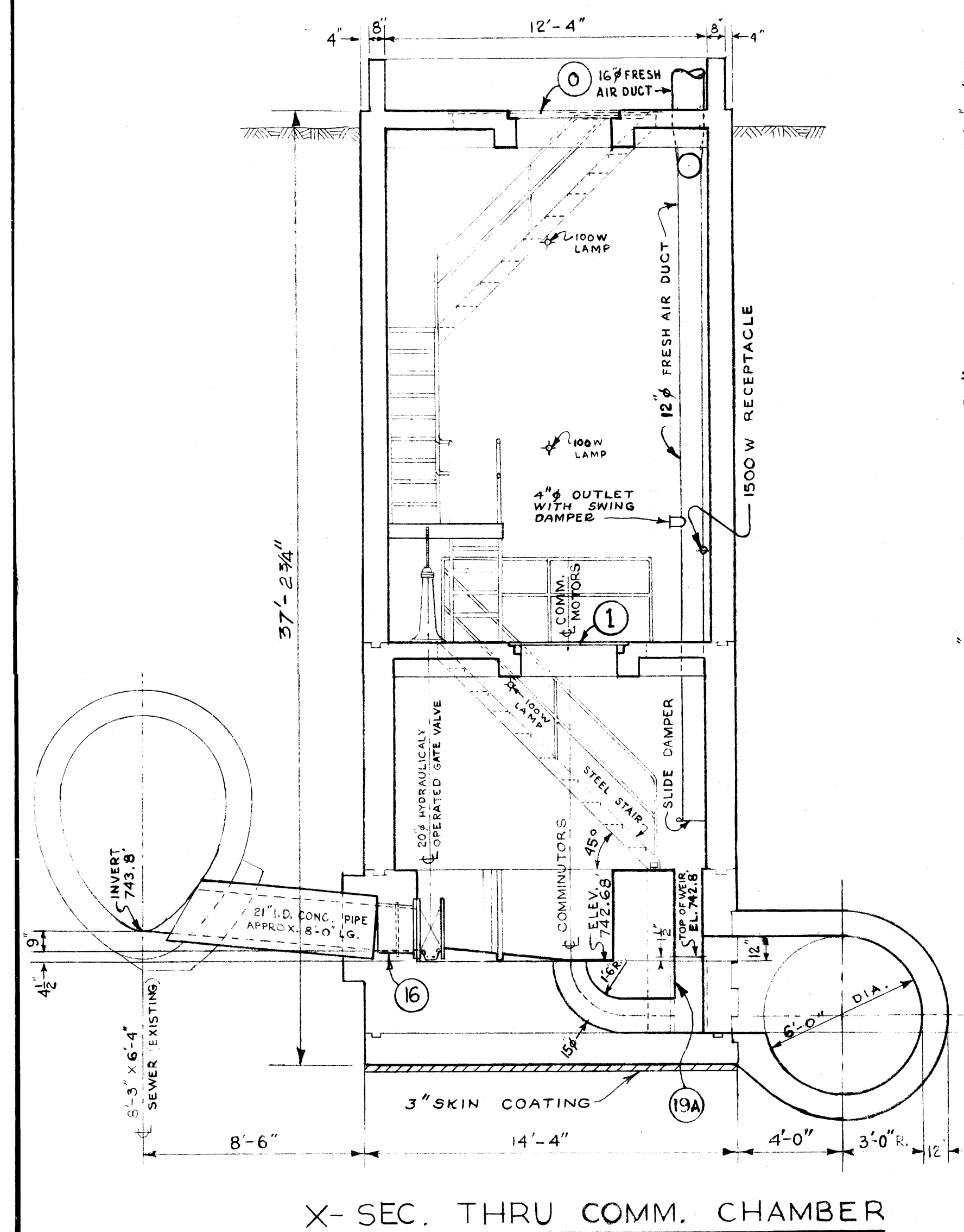


COMM. INLET & PUMP MOTOR RM. PLAN

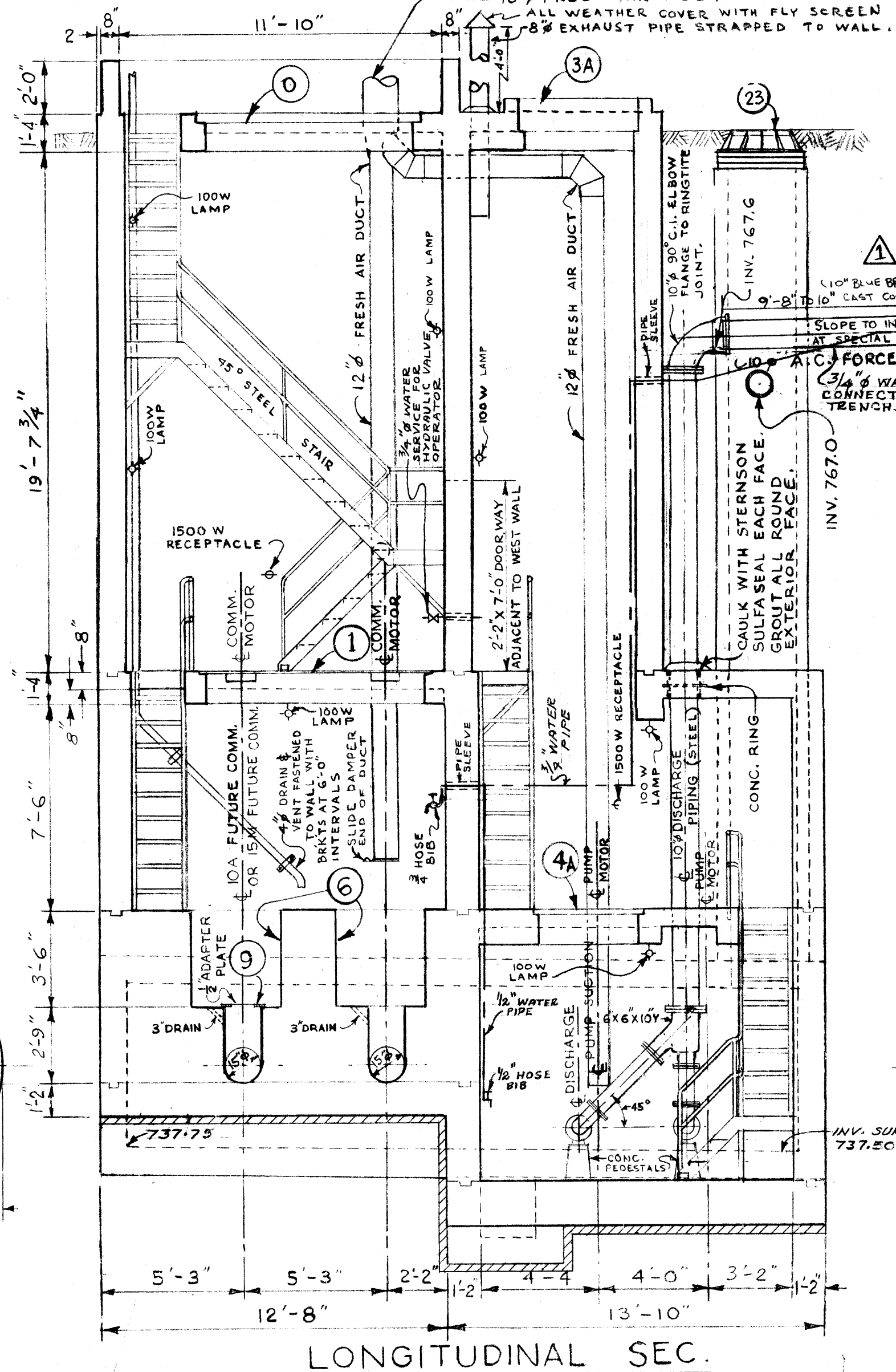


COMM. DISCHARGE, SUMP & PUMP RM. FL. PLAN

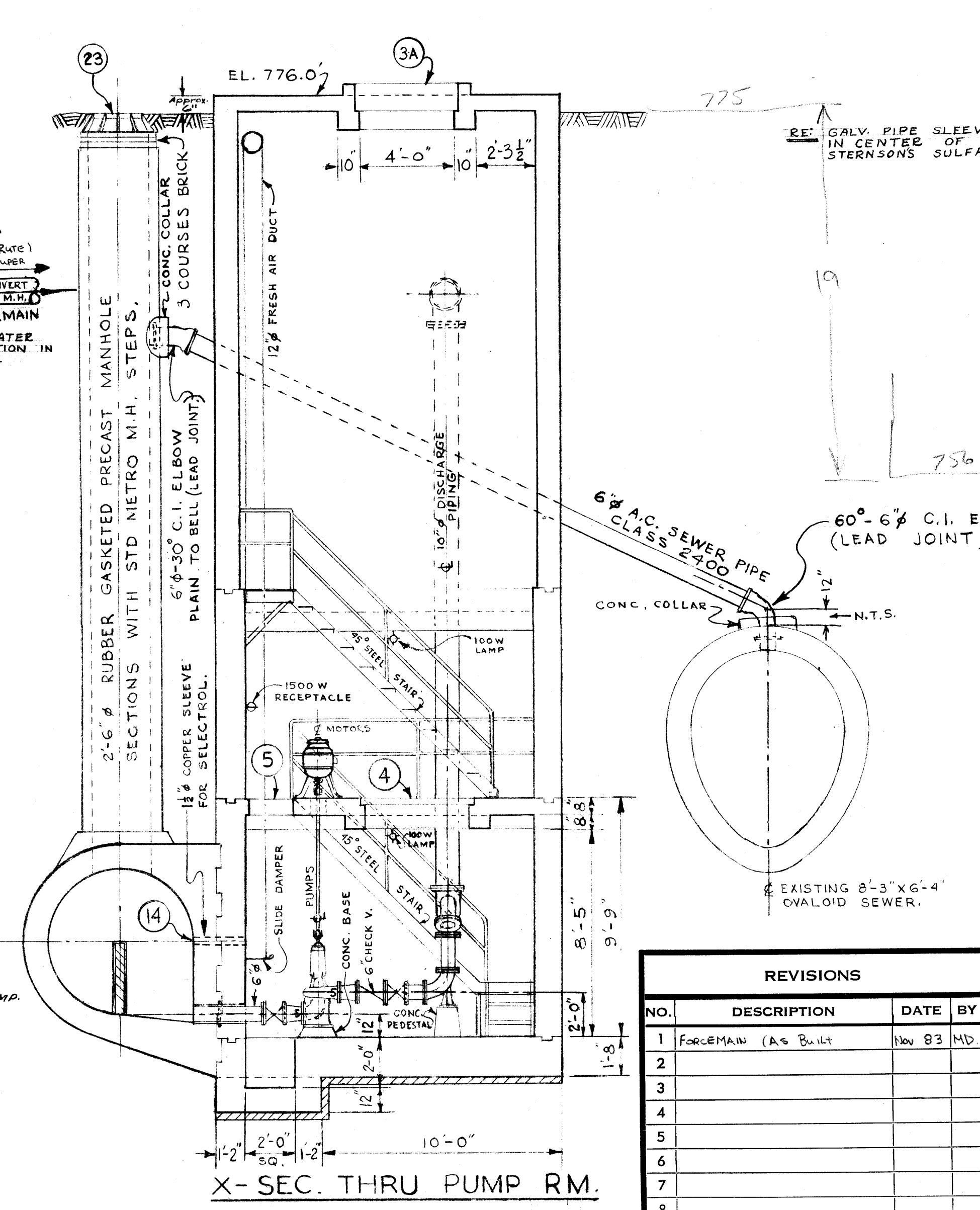
- 2- HOT GALV. ALL MISC METAL WORK.
- 3- A SHORT LENGTH OF PIPE (4' OR LESS), SHALL BE INSTALLED ADJACENT TO ALL C.I. PIPE OR RIGID FITTINGS.
- 4- CONTRACTOR TO SUPPLY SERVICE CLAMP WITH 1" OUTLET, 1/2" GALV. STEEL NIPPLE, 1/2" LONG, ONE RIGHT ANGLE, BRASS GLOBE & ANGLE VALVE, (SCREWED FITTINGS). VALVE TO TURN LEFT TO OPEN. SUPPLY SUITABLE EXTENSION STEM FOR OPERATING VALVE.
- 5- ALL VICTAULIC COUPLINGS TO BE STYLE #44.
- 6- PIPE SLEEVES WITH CONC. RING, CAULKED WITH OAKUM IN CENTRE OF SLEEVE & FINISHED WITH STERNSON'S SULFASAL OR EQUAL AT EA. FACE.
- 6- SUMP PUMP TO DISCHARGE INTO COMM. CHAMBER. (DISCHARGE TO PASS TROUGH WALL AT COMM. MOTOR FL. LEVEL.)



X- SEC. THRU COMM. CHAMBER



LONGITUDINAL SEC.



X- SEC. THRU PUMP RM.

AS BUILT MAR. 1971 V.D.



REVISIONS				THE METROPOLITAN CORPORATION OF GREATER WINNIPEG WATERWORKS & WASTE DISPOSAL DIVISION SEWAGE DISPOSAL BRANCH	
NO.	DESCRIPTION	DATE	BY		
1	FORCEMAIN (AS BUILT)	NOV 83	MD		
2					
3					
4					
5					
6					
7					
8					

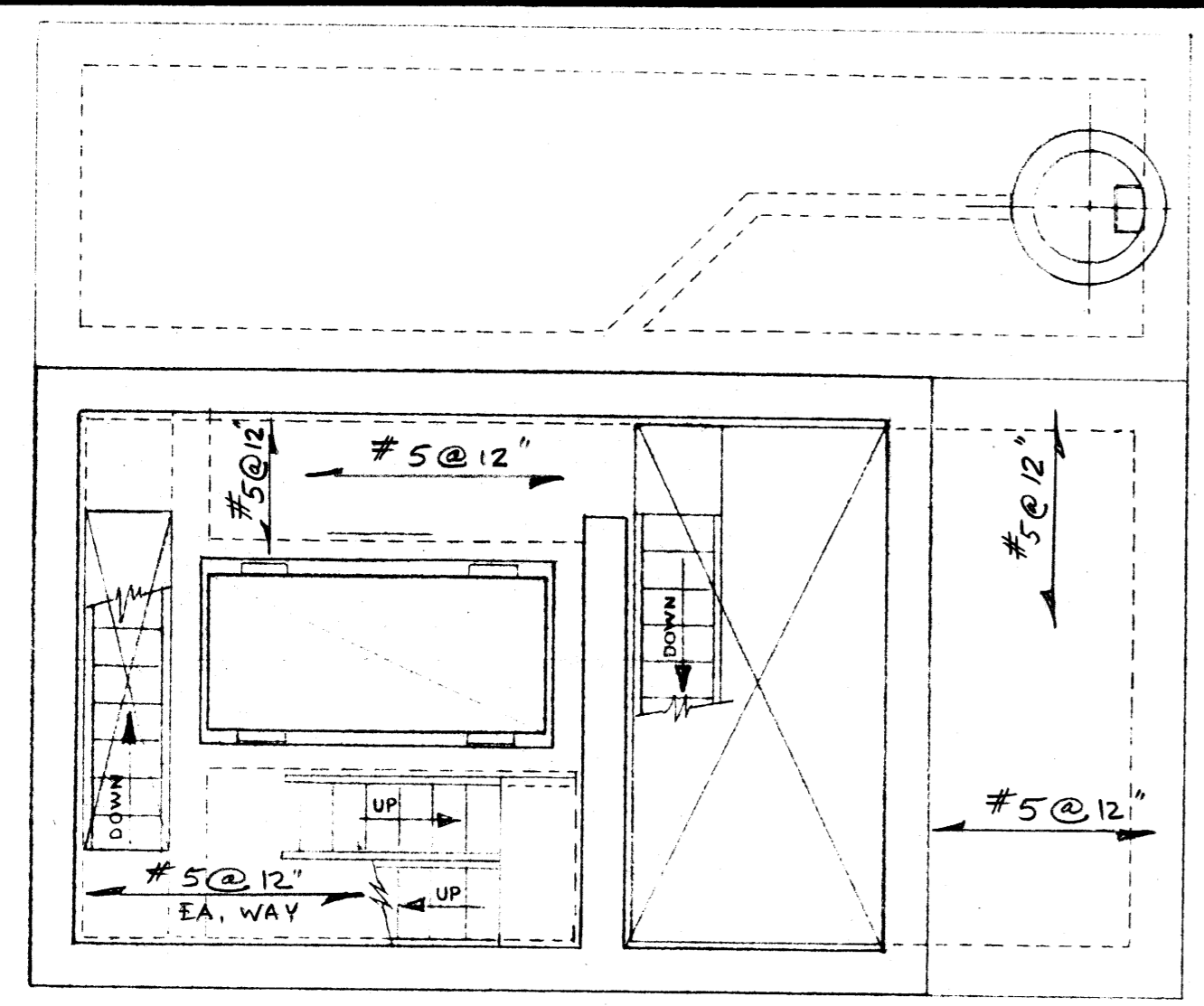
APPROVED BY <i>[Signature]</i> DATE	DESIGNED BY <i>[Signature]</i> DATE	CHECKED BY <i>[Signature]</i> DATE	DRAWING NO. <b>404</b>
CHIEF ENGINEER	SCALE	MAY 1963	

Micro-Filmed 1965

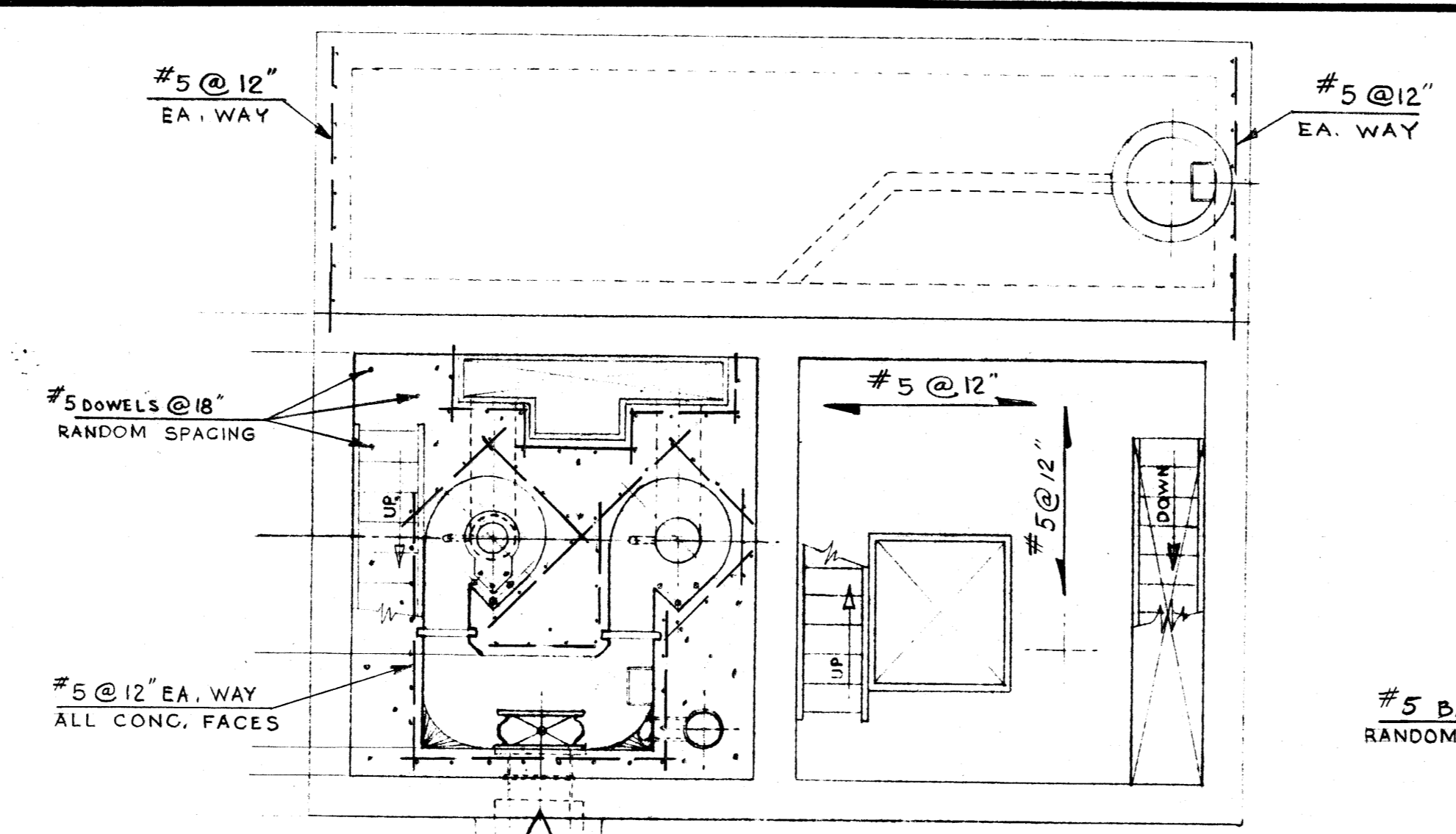
MICROFILMED NOV 1983 MICROFILMED JANUARY 1972

404A file # SP10096

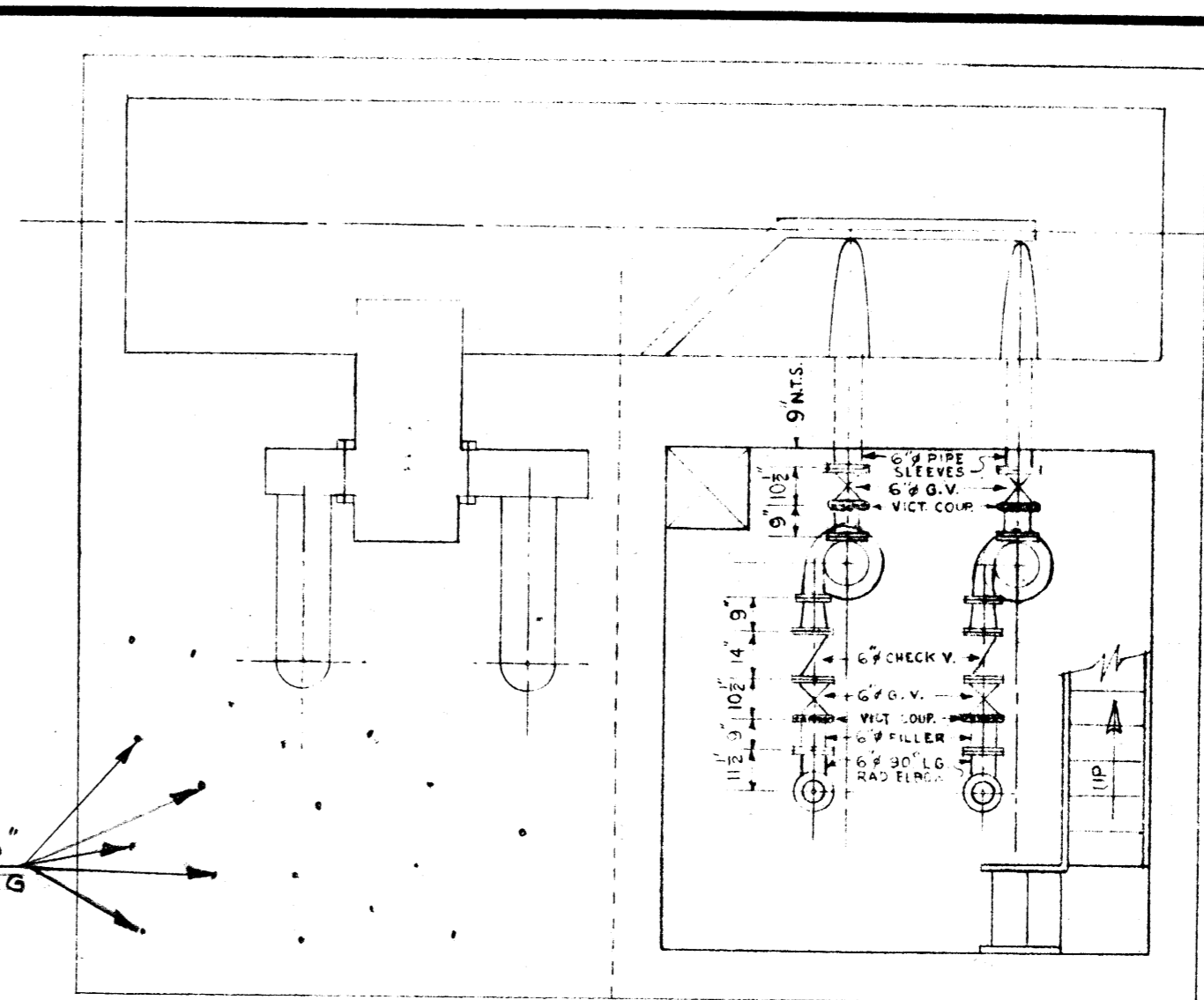
REF. or DRAWING NO. DETAILS



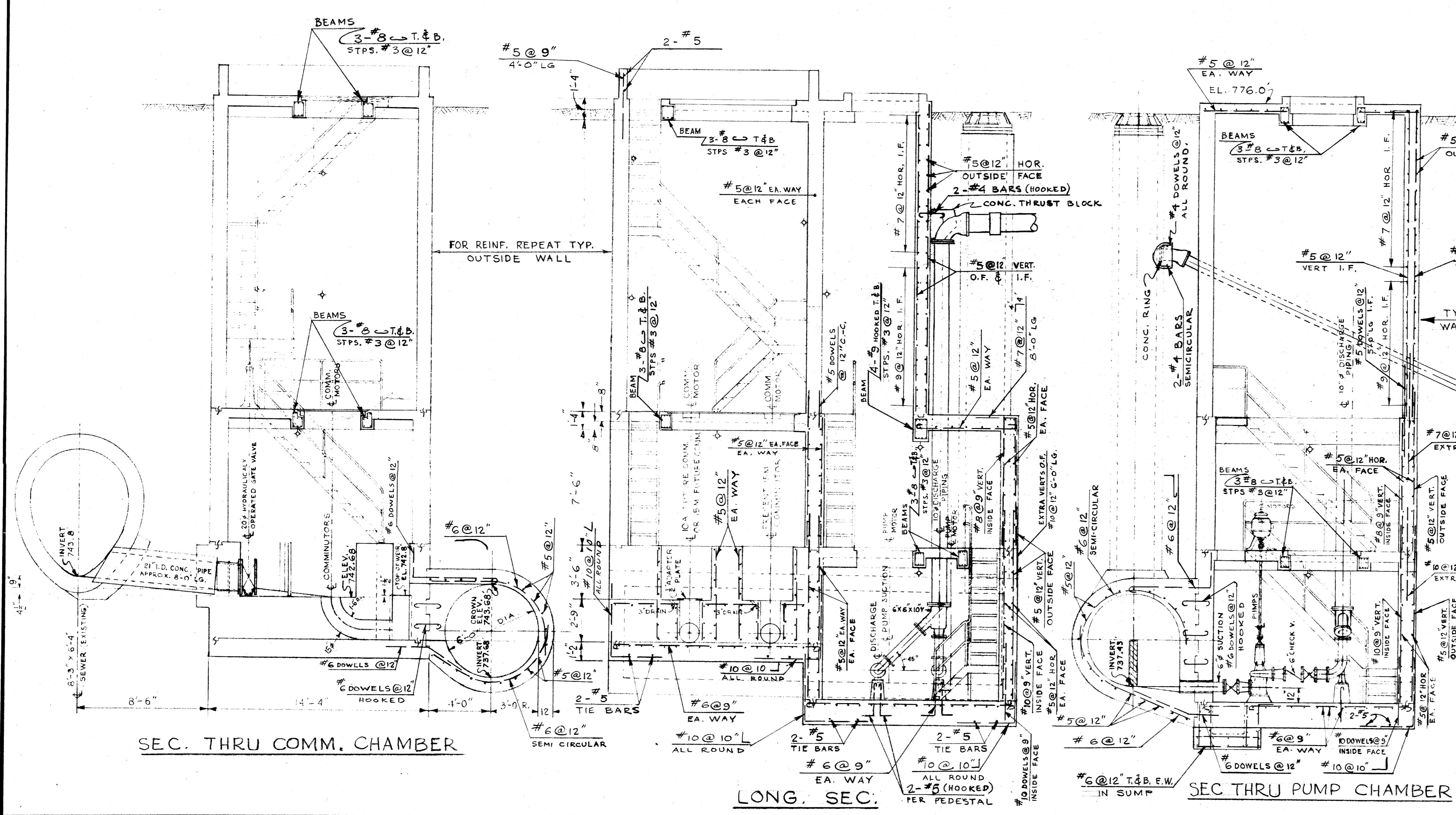
MOTOR RM. FL. PLAN



COMM. BASIN & PUMP MOTOR RM. FL.



SUMP INLET & PUMP CHAMBER FL.



SEC. THRU COMM. CHAMBER

LONG. SEC.

SEC THRU PUMP CHAMBER

AS BUILT MAR. 1971 V.D.



REVISIONS			
NO.	DESCRIPTION	DATE	BY
1			
2			
3			
4			
5			
6			
7			
8			

THE METROPOLITAN CORPORATION OF GREATER WINNIPEG			
WATERWORKS & WASTE DISPOSAL DIVISION			
SEWAGE DISPOSAL BRANCH			
ST. JAMES INTERCEPTOR			
CONWAY COMM. & PUMPING STA.			
REINF. DETAILS			
APPROVED BY	DESIGNED BY	CHECKED BY	DRAWING NO.
<i>[Signature]</i>	<i>[Signature]</i>	<i>[Signature]</i>	404A
DATE	DATE	DATE	
MAY 1969			
CHIEF ENGINEER	SCALE		
	1"=1'-0"		

Micro-Filmed 1965  
FILMED JANUARY 1972



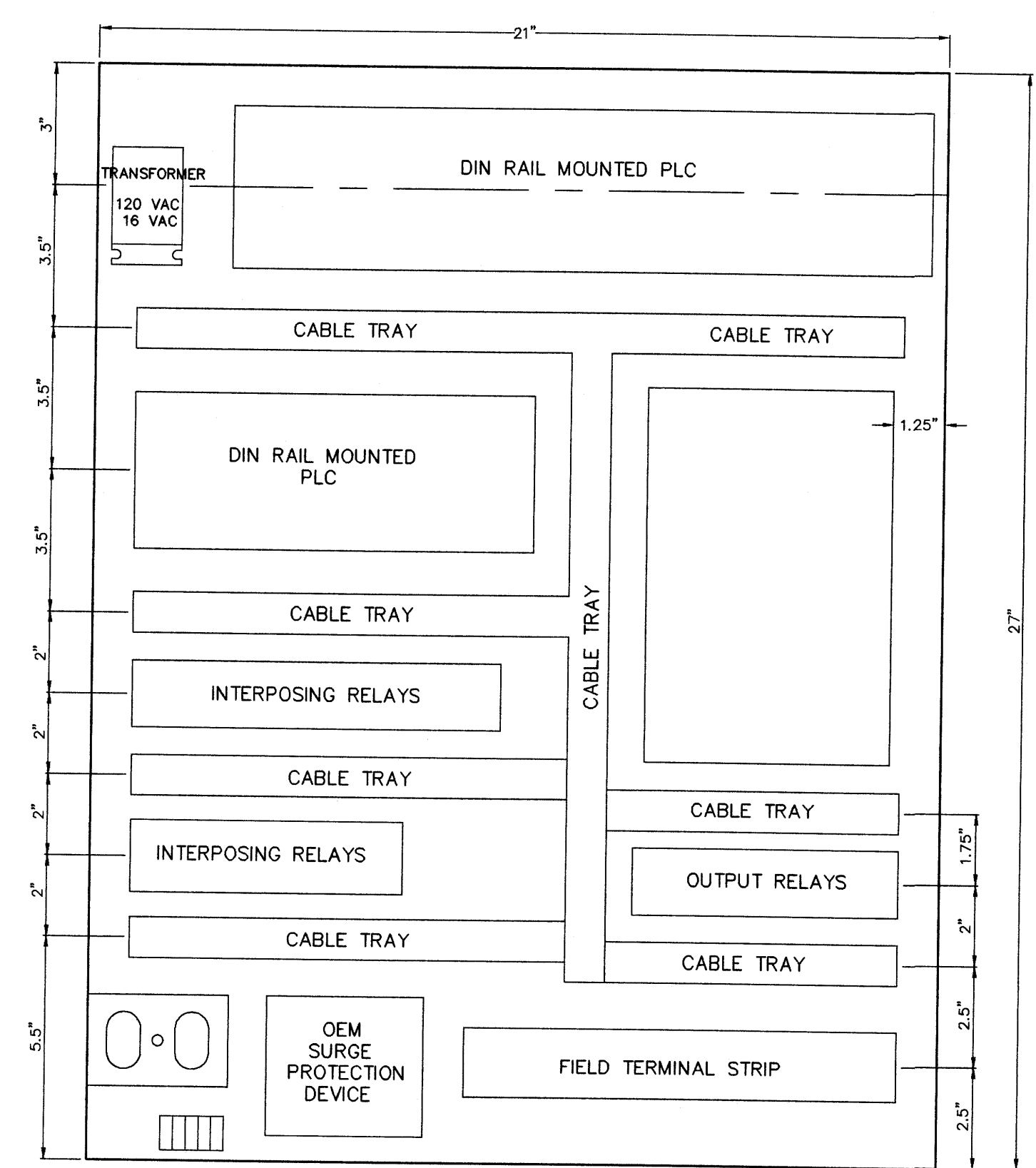
ALARM WIRING TEMPLATE

ALARM INPUT #	DESCRIPTION	PLC ADDRESS	COLOR
ALARM INPUT 1	LOCKOUT	10001	BLUE
ALARM INPUT 2	OVERFLOW	10002	BLUE/WHITE
ALARM INPUT 3	STATION FLOOD	10003	BLUE/RED
ALARM INPUT 4	LOW INSTR. AIR	10004	BLUE/BLACK
ALARM INPUT 5	LOW TEMP.	10005	RED
ALARM INPUT 6	LOSS OF SEAL WATER	10006	RED/BLACK
ALARM INPUT 7	GENERATOR RUN	10007	RED/WHITE
ALARM INPUT 8	POWER FAILURE	10008	ORANGE
ALARM INPUT 9	FLOOD STATION HIGH WET WELL	10009	ORANGE/RED
ALARM INPUT 10	FLOOD STATION FLOOD	10010	ORANGE/BLACK
ALARM INPUT 11	GENERATOR FAIL	10011	BLACK
ALARM INPUT 12	WET WELL UPPER	10012	BLACK/WHITE
ALARM INPUT 13	COM/PUMP FAILURE	10013	BLACK/RED
ALARM INPUT 14			GREEN
ALARM INPUT 15			GREEN/BLACK
ALARM INPUT 16			GREEN/WHITE

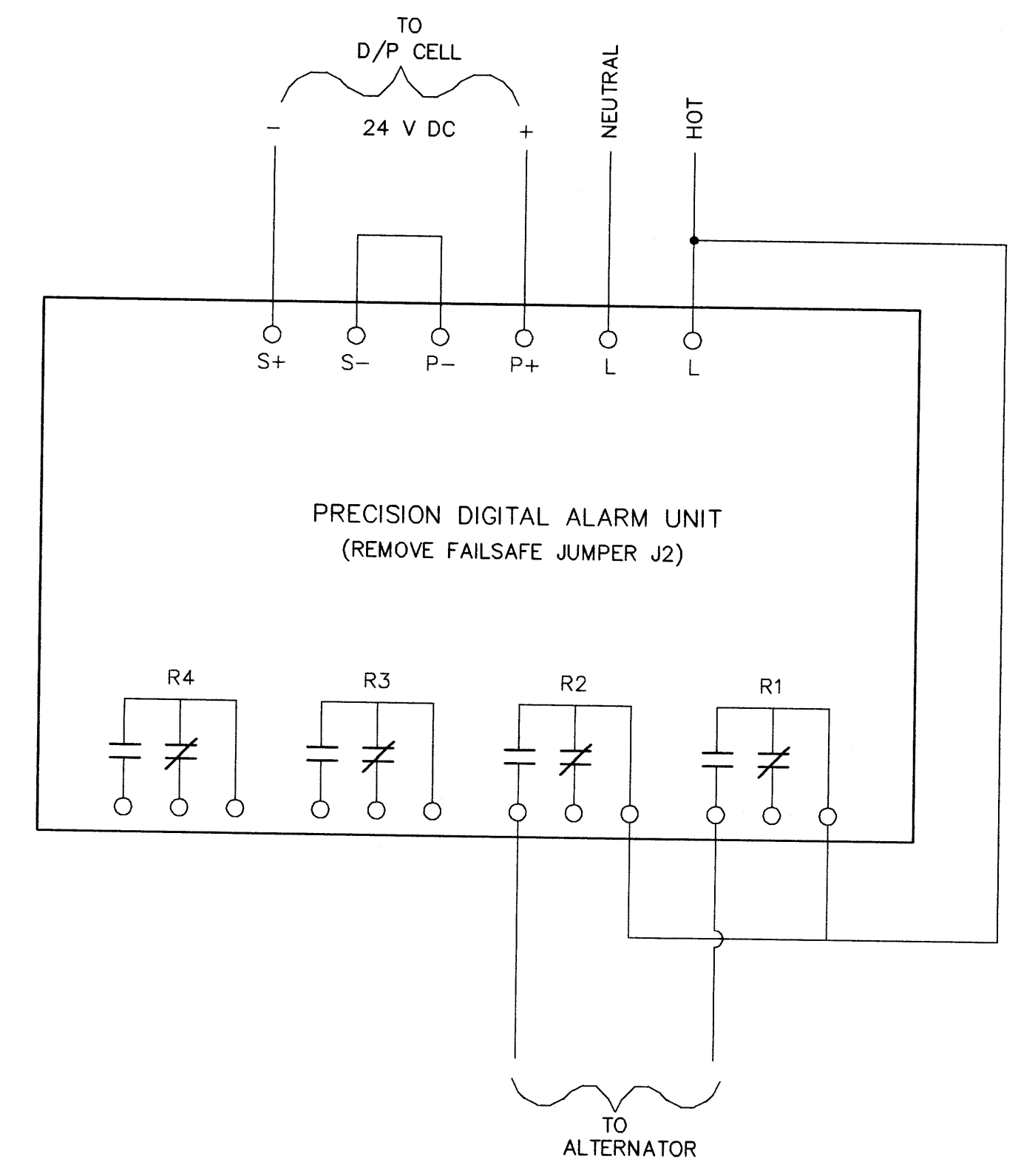
Any other types of alarms are to be wired to alarm inputs 14 through 16. Otherwise call the Metershop for further instructions.

ANALOG WIRING	PLC ADDRESS
INPUT 1	LIFT LEVEL 30001
INPUT 2	FLOOD LEVEL 30002
INPUT 3	FLOW 30003

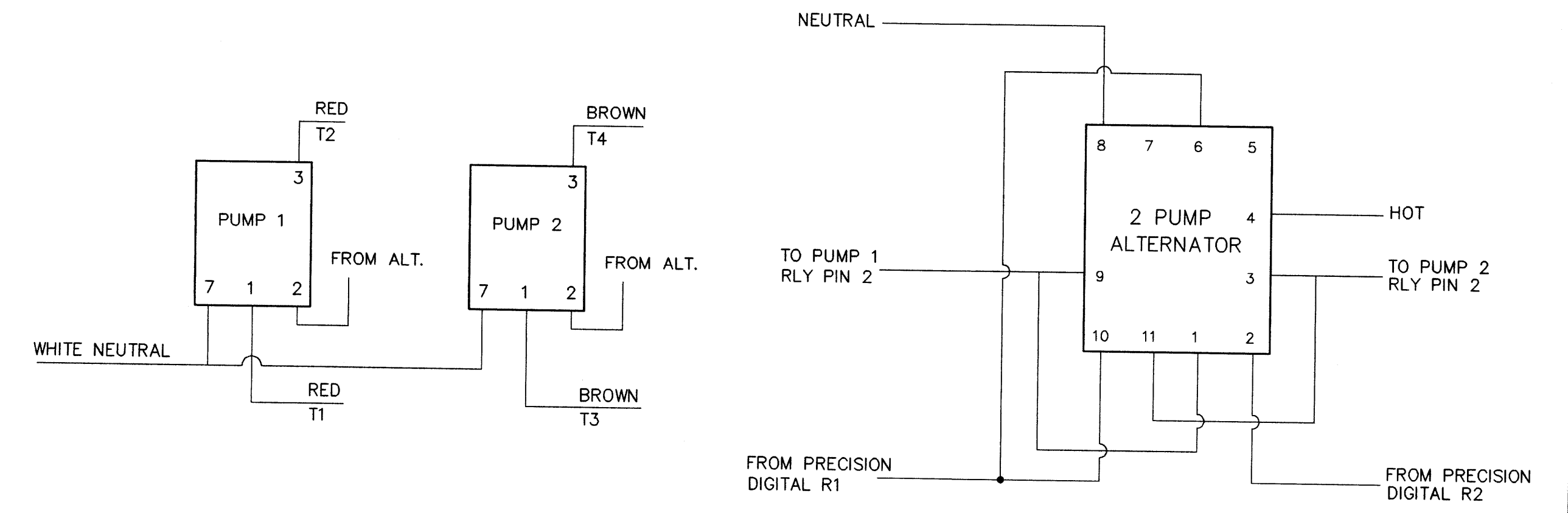
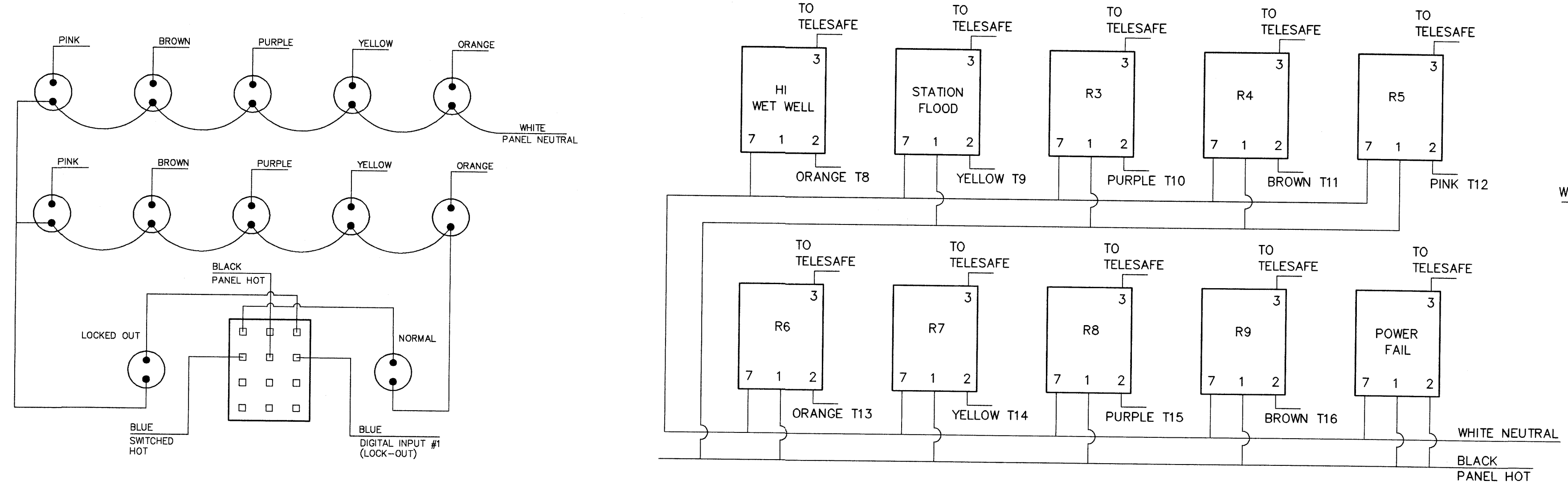
BACK PANEL LAYOUT



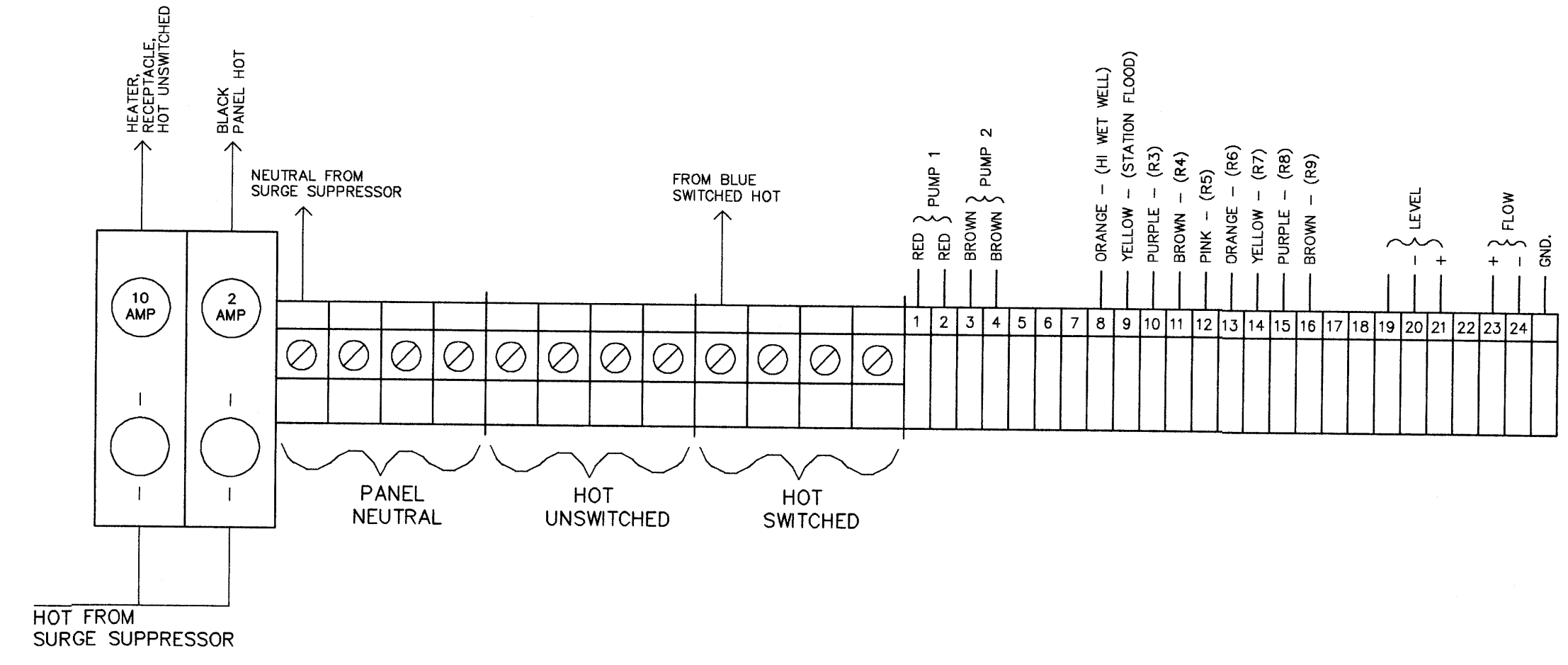
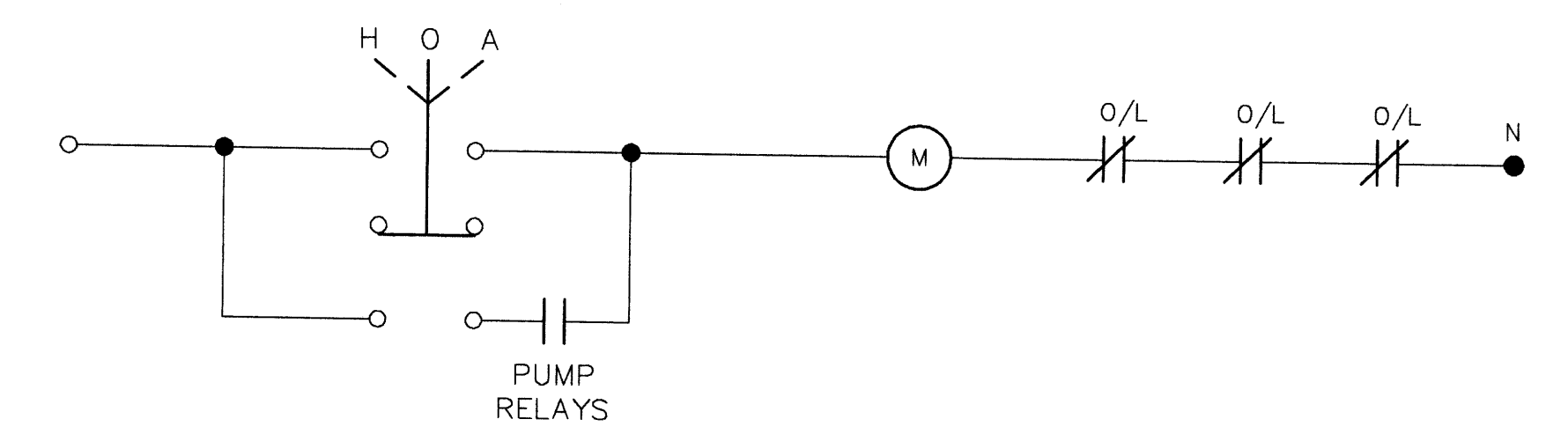
ELECTRICAL DISTRIBUTION LAYOUT



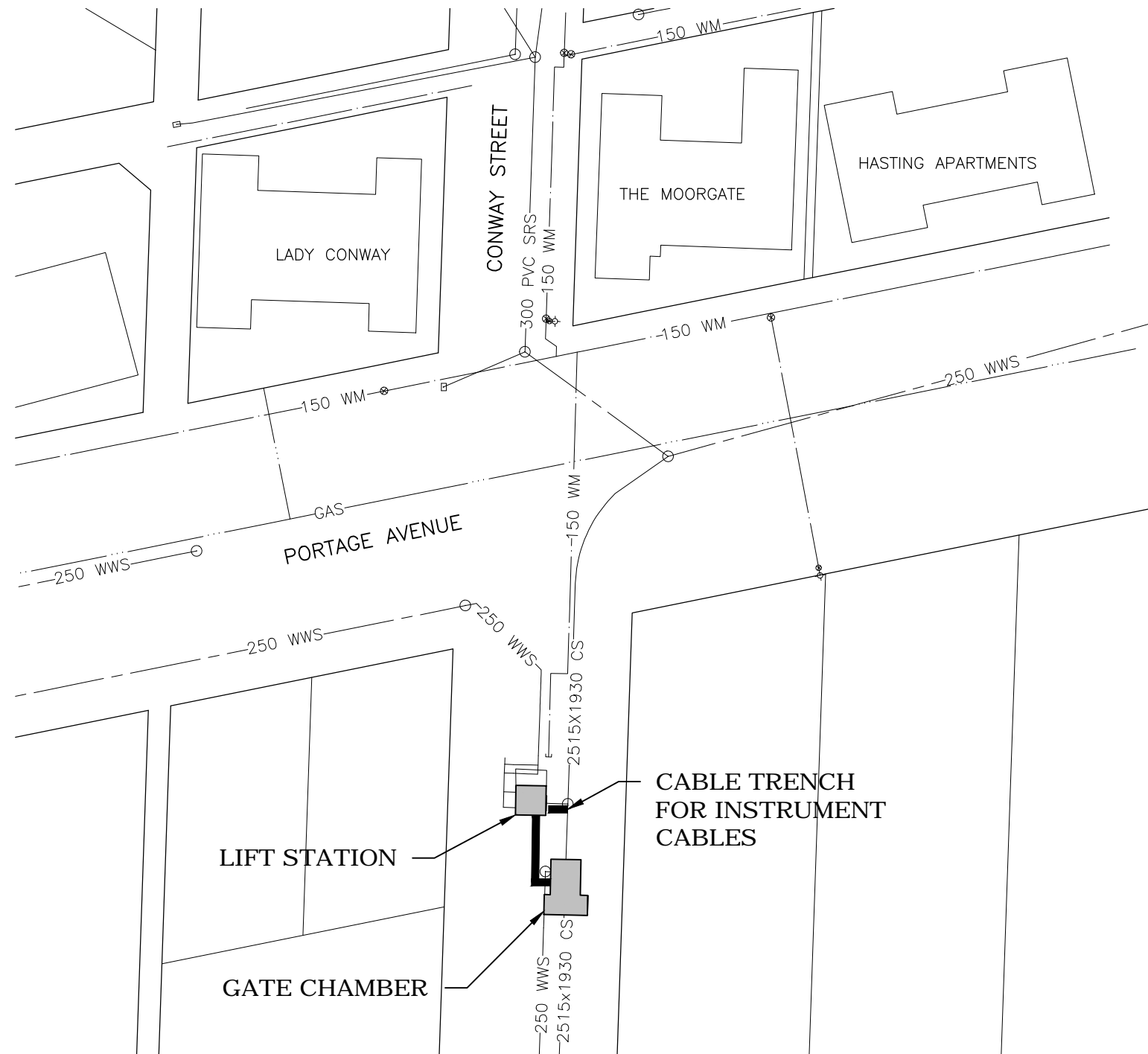
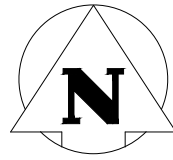
WIRING DIAGRAM



TYPICAL MOTOR STARTER



B.M. ELEV.	FIELD BOOK #	<b>CITY OF WINNIPEG</b> <b>WATER AND WASTE</b> <b>ENGINEERING DIVISION</b>	ENGINEER'S SEAL	 <b>THE CITY OF WINNIPEG</b> WATER AND WASTE DEPARTMENT
POSTED TO LBIS			DESIGNED BY	
			DRAWN BY DS	APPROVED BY
			HOR. SCALE N.T.S.	RELEASED FOR CONSTRUCTION
			VERTICAL	DATE
NO. REVISIONS	DATE	BY	DATE 1999 04 16	DATE
			PLOT DATE: 1999 04 16	CONWAY LIFT STATION ELECTRICAL AND CONTROL SHEET OF CITY DRAWING NUMBER <b>4492</b>



Centre-Punch w/Cross Hairs on North West  
Corner of Concrete Pad of Gate Chamber,  
South East of Pump Station

### WARNING

IF POWER EQUIPMENT OR EXPLOSIVES ARE TO BE USED FOR EXCAVATION ON THIS PROJECT THE CONTRACTOR MUST:  
1) NOTIFY THE GAS COMPANY OF THE PROPOSED LOCATION OF EXCAVATION.  
2) TAKE PRECAUTION TO AVOID DAMAGE TO GAS COMPANY INSTALLATIONS.  
SEE PROVINCIAL REGULATION 140/92 FOR DETAILS

### METRIC

WHOLE NUMBERS INDICATE MILLIMETRES  
DECIMALIZED NUMBERS INDICATE METRES



Certificate of Authorization

Stantec Consulting Ltd.

No. 1301

NOTE:  
TRENCH DEPTH  
BETWEEN 1.0m AND 1.5m

V:\1112\active\111213650\0300\_drawing\305\_record\sheet\_files\electrical\Conway (Moorgate)\13650e-1700-con.dwg 2015/09/10 9:48 AM By: Better, Kyle

#### LOCATION APPROVED UNDERGROUND STRUCTURES

SUPV. U/G STRUCTURES COMMITTEE DATE

NOTE:  
LOCATION OF UNDERGROUND STRUCTURES AS SHOWN ARE BASED ON THE BEST INFORMATION AVAILABLE BUT NO GUARANTEE IS GIVEN THAT ALL EXISTING UTILITIES ARE SHOWN OR THAT THE GIVEN LOCATIONS ARE EXACT. CONFIRMATION OF EXISTENCE AND EXACT LOCATION OF ALL SERVICES MUST BE OBTAINED FROM THE INDIVIDUAL UTILITIES BEFORE PROCEEDING WITH CONSTRUCTION.

B.M. ELEV.	WWD-42	236.618 m
NO.	REVISIONS	DATE BY
D	REVISED AS-BUILT DRAWING	13.07.24 S.T.
C	AS-BUILT DRAWING	13.05.31 S.T.
B	ISSUED FOR CLIENT REVIEW	12.07.13 J.C.
A	ISSUED FOR CLIENT REVIEW	12.06.08 J.C.

**Stantec Consulting Ltd.**  
905 Waverley Street, Winnipeg, Manitoba  
Tel 204-489-5900 Fax 204-453-9012

DESIGNED BY	S.T.	CHECKED BY	J.C.
DRAWN BY	B.W.	APPROVED BY	J.C.
HOR. SCALE:	1:750	RELEASED FOR CONSTRUCTION:	
VERTICAL:		DATE	2012.06.06

ENGINEER'S SEAL

CONSULTANT DRAWING NO.  
**E-1700**

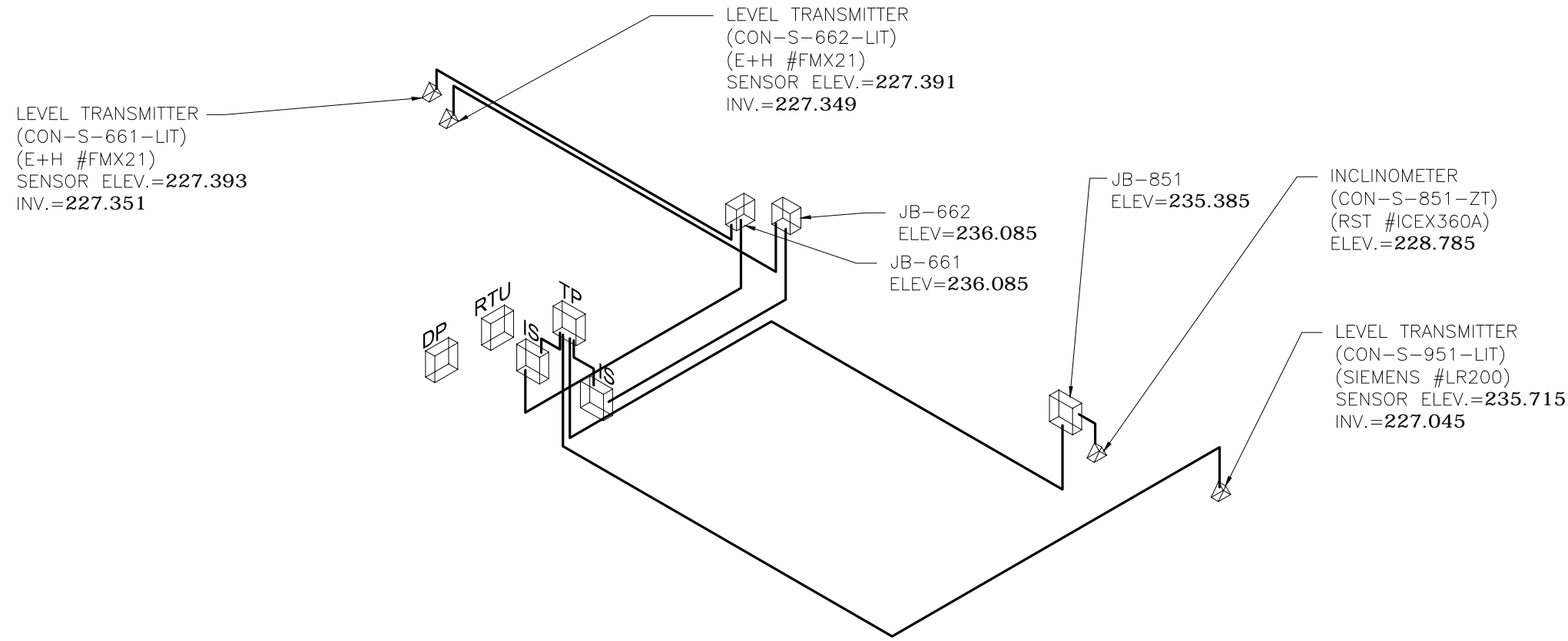
**THE CITY OF WINNIPEG**  
WATER AND WASTE DEPARTMENT

CSO OUTFALL MONITORING  
CONWAY STREET  
ELECTRICAL SITE PLAN  
CABLE TRENCHING

SHEET	OF
I	I
CAD FILE DRAWING NUMBER 13650e-1700-con.dwg	
CITY DRAWING NUMBER <b>I-0131-A-A0201-001-00</b>	



V:\1112\active\111213650\0300\_drawing\305\_record\sheet\_files\electrical\conway (Moorgate)\13650e-1701-con.dwg  
2015/08/18 11:21 AM By: Bekker, Kyle



**BOLD ELEVATIONS FROM STANTEC**

Benchmark Elevation = 236.618  
Centre-Punch w/Cross Hairs on North West Corner of Concrete Pad of Gate Chamber, South East of Pump Station

**WARNING**

IF POWER EQUIPMENT OR EXPLOSIVES ARE TO BE USED FOR EXCAVATION ON THIS PROJECT THE CONTRACTOR MUST:

- 1) NOTIFY THE GAS COMPANY OF THE PROPOSED LOCATION OF EXCAVATION.
- 2) TAKE PRECAUTION TO AVOID DAMAGE TO GAS COMPANY INSTALLATIONS.

SEE PROVINCIAL REGULATION 140/92 FOR DETAILS

**METRIC**

WHOLE NUMBERS INDICATE MILLIMETRES  
DECIMALIZED NUMBERS INDICATE METRES



\* BAROMETRIC SENSOR LOCATION

**LEGEND**

- RTU- REMOTE TERMINAL UNIT PANEL
- DP - POWER DISTRIBUTION PANEL
- TP - TERMINATION PANEL
- IS - INTRINSIC SAFETY BARRIER PANEL
- JB - JUNCTION BOX
- INSTRUMENTATION CABLE
- FT - FLOW METER TRANSMITTER
- - FLOW METER SENSOR
- ▽ - LEVEL TRANSMITTER, INCLINOMETER

**LOCATION APPROVED UNDERGROUND STRUCTURES**

SUPV. U/G STRUCTURES COMMITTEE DATE

**NOTE:**  
LOCATION OF UNDERGROUND STRUCTURES AS SHOWN ARE BASED ON THE BEST INFORMATION AVAILABLE BUT NO GUARANTEE IS GIVEN THAT ALL EXISTING UTILITIES ARE SHOWN OR THAT THE GIVEN LOCATIONS ARE EXACT. CONFIRMATION OF EXISTENCE AND EXACT LOCATION OF ALL SERVICES MUST BE OBTAINED FROM THE INDIVIDUAL UTILITIES BEFORE PROCEEDING WITH CONSTRUCTION.

B.M. ELEV.			
E	REVISED AS-BUILT DRAWING	13.07.24	S.T.
D	AS-BUILT DRAWING	13.05.31	S.T.
C	ISSUED FOR CLIENT REVIEW	13.04.15	J.C.
B	ISSUED FOR CLIENT REVIEW	13.03.21	J.C.
A	ISSUED FOR CLIENT REVIEW	12.07.13	J.C.
NO.	REVISIONS	DATE	BY

500-311 Portage Avenue, Winnipeg, Manitoba  
Tel 204-489-5900 Fax 204-453-9012

DESIGNED BY	S.T.	CHECKED BY	J.C.
DRAWN BY	B.W.	APPROVED BY	J.C.
HOR. SCALE:		RELEASED FOR CONSTRUCTION:	
VERTICAL:		DATE	
DATE	2012.06.06	DATE	

ENGINEER'S SEAL

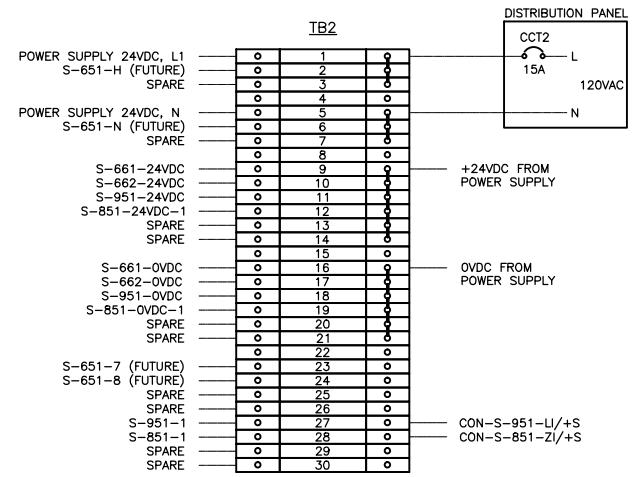
CONSULTANT DRAWING NO.  
**E-1701**

**THE CITY OF WINNIPEG**  
WATER AND WASTE DEPARTMENT

CSO OUTFALL MONITORING		SHEET	OF
CONWAY STREET		2	2
3D ISOMETRIC PLAN		CAD FILE DRAWING NUMBER	
		13650e-1701-con.dwg	
		CITY DRAWING NUMBER	
		1-0131-A-A0202-002-00	



V:\1112\active\11213650\0300\_drawing\305\_record\sheet\_files\electrical\conway (Moorgate)\13650e-1702-con.dwg 2015/09/10 9:49 AM By: Bekker, Kyle

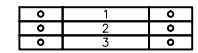


**NOTES**

- 1) TERMINAL BLOCKS WEIDMULLER #WDU4
- 2) FUSED TERMINAL BLOCKS WEIDMULLER #WS16:  
TERMINAL BLOCK 1, C/W FUSE 1A  
TERMINAL BLOCK 2, C/W FUSE 1A  
TERMINAL BLOCK 3, C/W FUSE 1A  
TERMINAL BLOCK 9, C/W FUSE 500mA  
TERMINAL BLOCK 10, C/W FUSE 500mA  
TERMINAL BLOCK 11, C/W FUSE 500mA  
TERMINAL BLOCK 12, C/W FUSE 500mA  
TERMINAL BLOCK 13, C/W FUSE 500mA  
TERMINAL BLOCK 14, C/W FUSE 500mA
- 3) JUMPERS: 1-3; 5-7; 9-14; 16-21

**TB2 STRIP DETAIL**

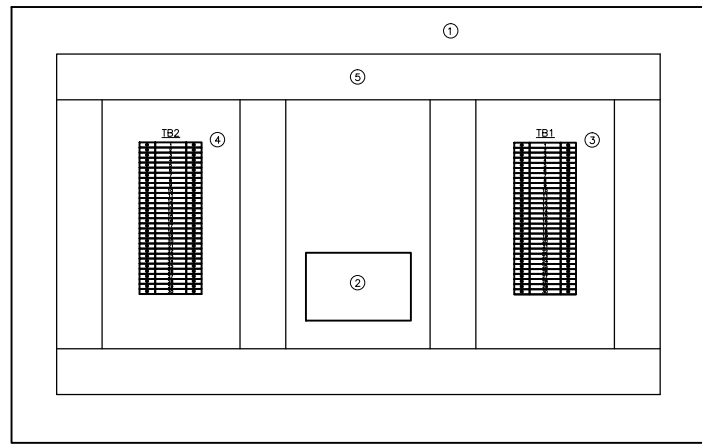
**TB1**



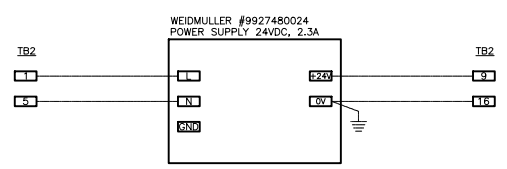
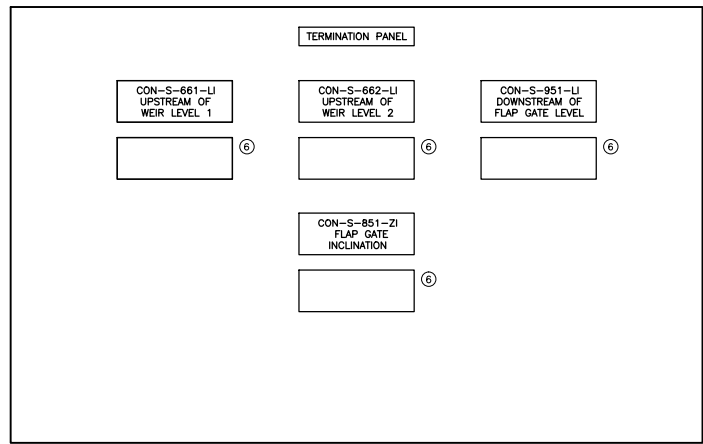
**NOTES**

- 1) FUSED TERMINAL BLOCKS WEIDMULLER #WS16, C/W 500mA FUSE
- 2) FEED-THROUGH TERMINAL BLOCKS WEIDMULLER #WDU4
- 3) FEED-THROUGH TERMINAL BLOCKS WEIDMULLER #WDU4
- 4) REPEAT FOR ALL AIs AND AOs.

**TB1 STRIP DETAIL**



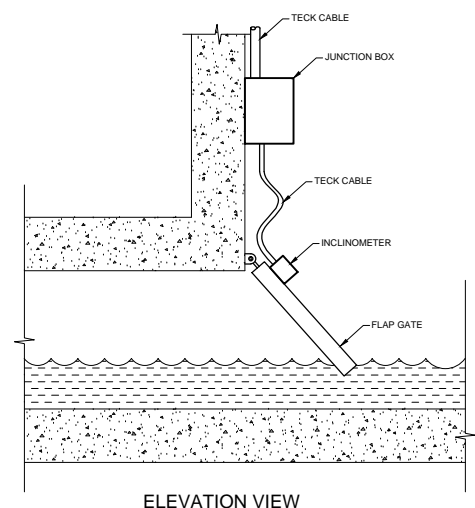
**TERMINATION PANEL DETAIL**



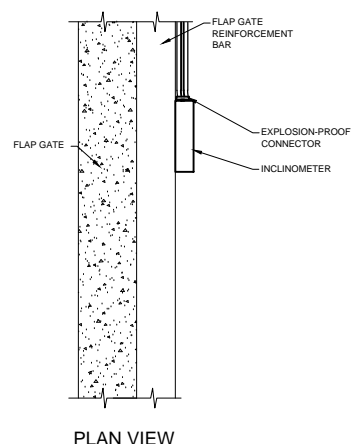
**POWER SUPPLY 24VDC WIRING DETAIL**

**LEGEND**

- 1) HOFFMAN #CSD20248 TYPE 12 ENCLOSURE C/W PANEL #CP2420
- 2) WEIDMULLER #9927480024 POWER SUPPLY 24VDC, 2.3A
- 3) TB1 TERMINAL BLOCKS STRIP. SEE DETAIL.
- 4) TB2 TERMINAL BLOCKS STRIP. SEE DETAIL.
- 5) PANDUIT #E1X2LG6 WIRE DUCT C/W COVER #C1LG6
- 6) SIEMENS #7ML5741 DIGITAL INDICATOR



**ELEVATION VIEW**



**PLAN VIEW**

**GENERAL NOTES**

- 1) CABLE SHALL BE SECURED ON THE FLAP GATE CHAMBER WALL AND FLAP GATE
- 2) EXTRA CABLE SHALL BE PROVIDED TO RELIEVE CABLE STRESS AT THE JUNCTION OF THE FLAP GATE AND THE CHAMBER WALL
- 3) INSTRUMENT AND JUNCTION BOX MOUNTING BRACKET NEED TO BE ADJUSTED ACCORDING TO FLAP GATE DESIGN
- 4) EXPLOSION-PROOF CONNECTOR SHALL BE SEALED WITH EPOXY TO PREVENT GAS MIGRATION

**RST INSTRUMENTS INCLINOMETER INSTALLATION DETAIL**

No.	INSTRUMENT TAG	DESCRIPTION	MANUFACTURER	MODEL	PLC I/O TYPE	POWER SUPPLY	LOCATION
1	CON-S-661-LIT	HYDROSTATIC LEVEL TRANSMITTER	ENDRESS+HAUSER	FMX21	1X AI	24VDC	UPSTREAM OF WEIR 1
2	CON-S-662-LIT	HYDROSTATIC LEVEL TRANSMITTER	ENDRESS+HAUSER	FMX21	1X AI	24VDC	UPSTREAM OF WEIR 2
3	CON-S-951-LIT	RADAR LEVEL TRANSMITTER	SIEMENS	SITRAN LR200	1X AI	24VDC	DOWNSTREAM OF FLAP GATE
4	CON-S-851-ZT	INCLINATION TRANSMITTER	RST INSTRUMENTS	ICEX360A	1X AI	24VDC	FLAP GATE

**INSTRUMENT LIST**

No.	CABLE TAG	FROM	TO	DESCRIPTION	MANUFACTURER	CATALOG No.	NOTE
1	S-661-LIT/L-S-661-TP	CON-S-661-LIT	CON-S-661-LX	#16 AWG, 2-PAIR, TWISTED, SHIELDED, TECK 90	TEXCAN	C3-9326-1602-19	4-20mA
2	S-662-LIT/L-S-662-TP	CON-S-662-LIT	CON-S-662-LX	#16 AWG, 2-PAIR, TWISTED, SHIELDED, TECK 90	TEXCAN	C3-9326-1602-19	4-20mA
3	S-951-LIT/L-S-951-TP	CON-S-951-LIT	TERMINATION PANEL	#16 AWG, 2-PAIR, TWISTED, SHIELDED, TECK 90	TEXCAN	C3-9326-1602-19	4-20mA
4	S-851-ZT/S-TB2-IB/L-S-851-TP	CON-S-851-ZT	TERMINATION PANEL	#16 AWG, 2-PAIR, TWISTED, SHIELDED, TECK 90	TEXCAN	C3-9326-1602-19	4-20mA
5		DISTRIBUTION PANEL	TERMINATION PANEL	#12 AWG, 2C, TECK 90	TEXCAN	05002-01-010	POWER 120VAC

**CABLE LIST**

**WARNING**

IF POWER EQUIPMENT OR EXPLOSIVES ARE TO BE USED FOR EXCAVATION ON THIS PROJECT THE CONTRACTOR MUST:  
 1) NOTIFY THE GAS COMPANY OF THE PROPOSED LOCATION OF EXCAVATION.  
 2) TAKE PRECAUTION TO AVOID DAMAGE TO GAS COMPANY INSTALLATIONS.  
 SEE PROVINCIAL REGULATION 140/92 FOR DETAILS

**METRIC**

WHOLE NUMBERS INDICATE MILLIMETRES  
 DECIMALIZED NUMBERS INDICATE METRES

**APEGM**  
 Certificate of Authorization  
 Stantec Consulting Ltd.  
 No. 1301

**LOCATION APPROVED UNDERGROUND STRUCTURES**

SUPV. U/G STRUCTURES COMMITTEE DATE

**NOTE:**  
 LOCATION OF UNDERGROUND STRUCTURES AS SHOWN ARE BASED ON THE BEST INFORMATION AVAILABLE BUT NO GUARANTEE IS GIVEN THAT ALL EXISTING UTILITIES ARE SHOWN OR THAT THE GIVEN LOCATIONS ARE EXACT. CONFIRMATION OF EXISTENCE AND EXACT LOCATION OF ALL SERVICES MUST BE OBTAINED FROM THE INDIVIDUAL UTILITIES BEFORE PROCEEDING WITH CONSTRUCTION.

B.M. ELEV.			
F	AS-BUILT DRAWING	13.07.24	S.T.
E	ISSUED FOR CLIENT REVIEW	13.05.31	S.T.
D	ISSUED FOR CLIENT REVIEW	13.04.15	J.C.
C	ISSUED FOR CLIENT REVIEW	13.04.01	J.C.
B	ISSUED FOR CLIENT REVIEW	12.07.13	J.C.
A	ISSUED FOR CLIENT REVIEW	12.06.08	J.C.
NO.	REVISIONS	DATE	BY

**Stantec Consulting Ltd.**  
 905 Waverley Street, Winnipeg, Manitoba  
 Tel 204-489-5900 Fax 204-453-9012

DESIGNED BY	S.T.	CHECKED BY	B.J.
DRAWN BY	S.T.	APPROVED BY	B.J.
HOR. SCALE:	N.T.S.	RELEASED FOR CONSTRUCTION:	
VERTICAL:		DATE	2012.06.06

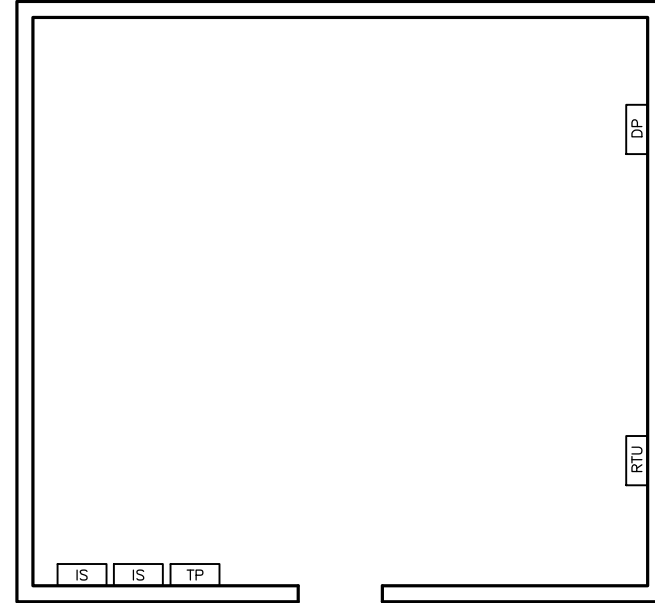
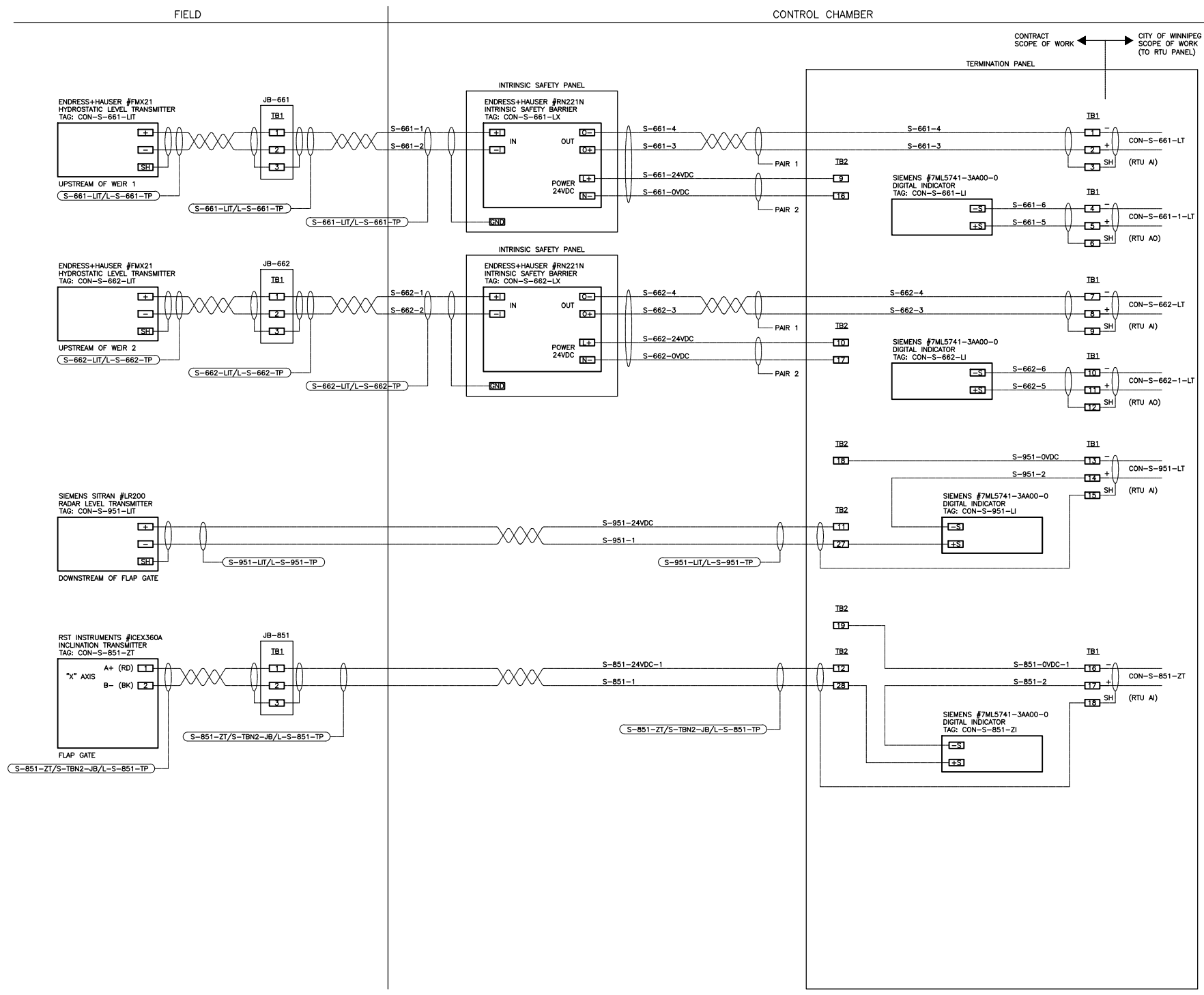
ENGINEER'S SEAL  
 CONSULTANT DRAWING NO.  
**E-1702**

**THE CITY OF WINNIPEG**  
 WATER AND WASTE DEPARTMENT

**CSO OUTFALL MONITORING**  
 CONWAY STREET  
 TERMINATION PANEL LAYOUT  
 INSTRUMENT LIST, CABLE LIST

SHEET	OF
1	1
CAD FILE DRAWING NUMBER 13650e-1702-con.dwg	
CITY DRAWING NUMBER <b>I-0131-A-A0203-001-00</b>	

V:\1112\active\111213650\0300\_drawing\305\_record\sheet\_files\electrical\conway (Moorgate)\13650e-1703-con.dwg 2015/09/10 9:49 AM By: Bekker, Kyle



ELECTRICAL ROOM FLOOR PLAN

- LEGEND**
- RTU - NEW RTU PANEL
  - TP - NEW TERMINATION PANEL
  - IS - NEW INTRINSIC SAFETY PANELS
  - DP - EXISTING DISTRIBUTION PANEL 120VAC

- NOTES**
- 1) INSTALL SHEETS OF PLYWOOD AND MOUNT ON BACKBOARD RTU PANEL, TP PANEL AND INTRINSIC SAFETY PANELS. ALLOW SPACE FOR FUTURE FLOW METER TRANSMITTER.

**WARNING**

IF POWER EQUIPMENT OR EXPLOSIVES ARE TO BE USED FOR EXCAVATION ON THIS PROJECT THE CONTRACTOR MUST:

- 1) NOTIFY THE GAS COMPANY OF THE PROPOSED LOCATION OF EXCAVATION.
- 2) TAKE PRECAUTION TO AVOID DAMAGE TO GAS COMPANY INSTALLATIONS.

SEE PROVINCIAL REGULATION 140/92 FOR DETAILS

**METRIC**

WHOLE NUMBERS INDICATE MILLIMETRES  
DECIMALIZED NUMBERS INDICATE METRES



**APEGM**  
Certificate of Authorization  
Stantec Consulting Ltd.  
No. 1301

**LOCATION APPROVED UNDERGROUND STRUCTURES**

SUPV. U/G STRUCTURES COMMITTEE DATE

**NOTE:**  
LOCATION OF UNDERGROUND STRUCTURES AS SHOWN ARE BASED ON THE BEST INFORMATION AVAILABLE BUT NO GUARANTEE IS GIVEN THAT ALL EXISTING UTILITIES ARE SHOWN OR THAT THE GIVEN LOCATIONS ARE EXACT. CONFIRMATION OF EXISTENCE AND EXACT LOCATION OF ALL SERVICES MUST BE OBTAINED FROM THE INDIVIDUAL UTILITIES BEFORE PROCEEDING WITH CONSTRUCTION.

NO.	REVISIONS	DATE	BY
E	AS-BUILT DRAWING	13.07.24	S.T.
D	ISSUED FOR CLIENT REVIEW	13.05.31	S.T.
C	ISSUED FOR CLIENT REVIEW	13.04.15	J.C.
B	ISSUED FOR CLIENT REVIEW	13.04.01	J.C.
A	ISSUED FOR CLIENT REVIEW	12.06.08	J.C.



**Stantec Consulting Ltd.**  
905 Waverley Street, Winnipeg, Manitoba  
Tel 204-489-5900 Fax 204-453-9012

DESIGNED BY	S.T.	CHECKED BY	B.J.
DRAWN BY	S.T.	APPROVED BY	B.J.
HOR. SCALE:	N.T.S.	RELEASED FOR CONSTRUCTION:	
VERTICAL:		DATE	2012.06.06

ENGINEER'S SEAL

CONSULTANT DRAWING NO.  
**E-1703**

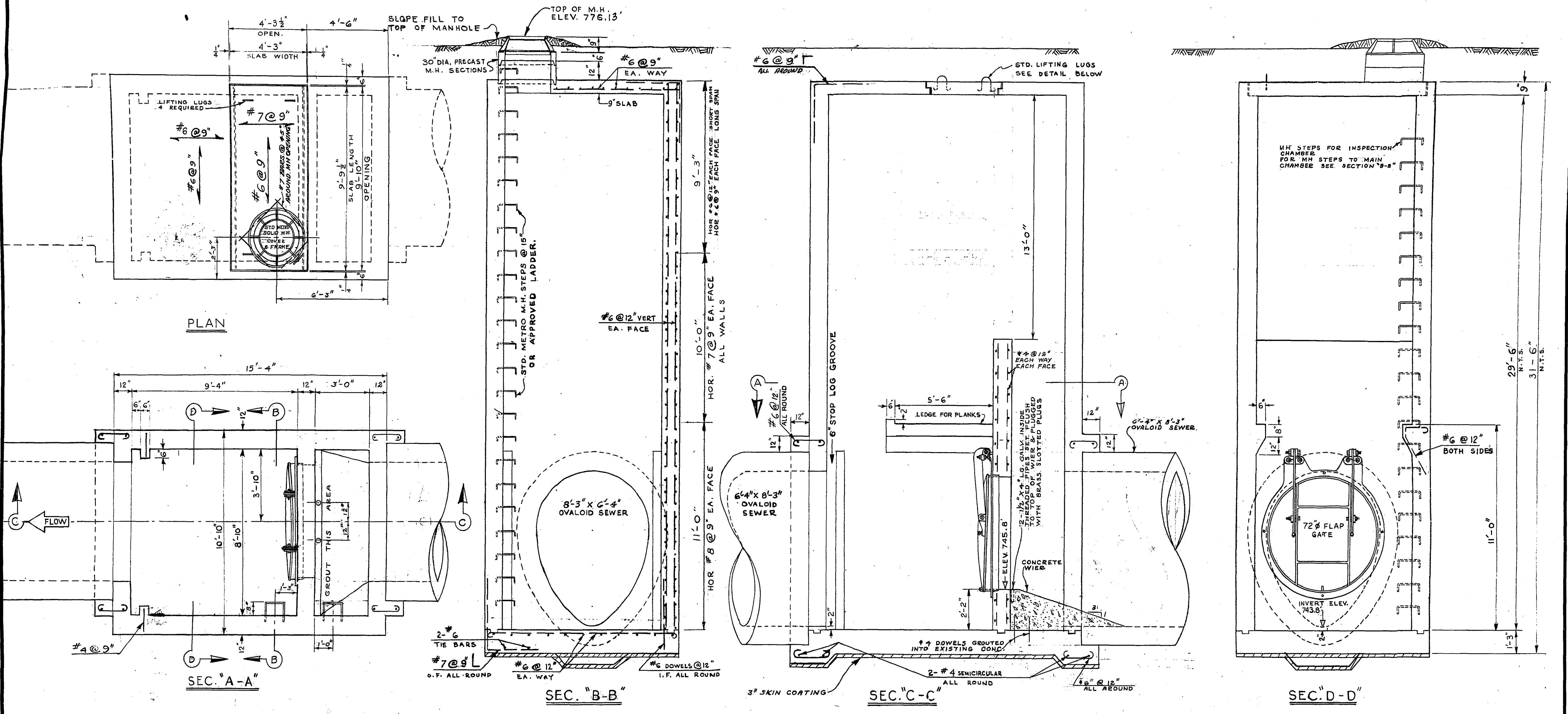


**THE CITY OF WINNIPEG**  
WATER AND WASTE DEPARTMENT

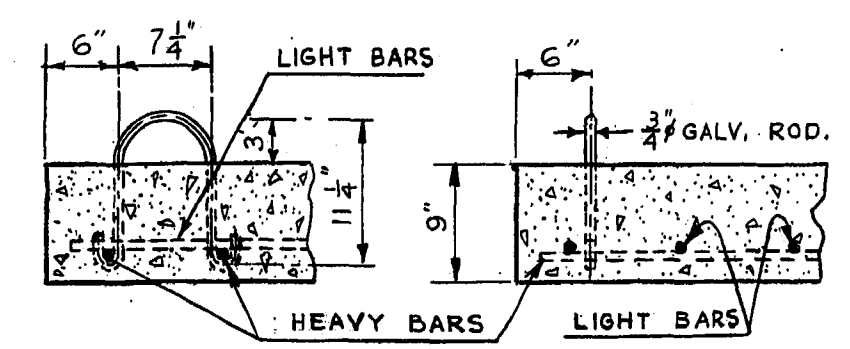
**CSO OUTFALL MONITORING**  
CONWAY STREET  
ELECTRICAL ROOM LAYOUT  
LOOP WIRING DIAGRAMS

SHEET	OF
I	I
CAD FILE DRAWING NUMBER 13650e-1703-con.dwg	
CITY DRAWING NUMBER <b>I-0131-A-A0204-001-00</b>	





- 1 SEAL ALL JOINTS OF REMOVEABLE SLAB WITH HOT PITCH.
- 2 HOT GALVANIZE ALL MISCELLANEOUS IRON WORK.



STANDARD LIFTING LUG DETAIL  
SCALE 1"=1'-0"

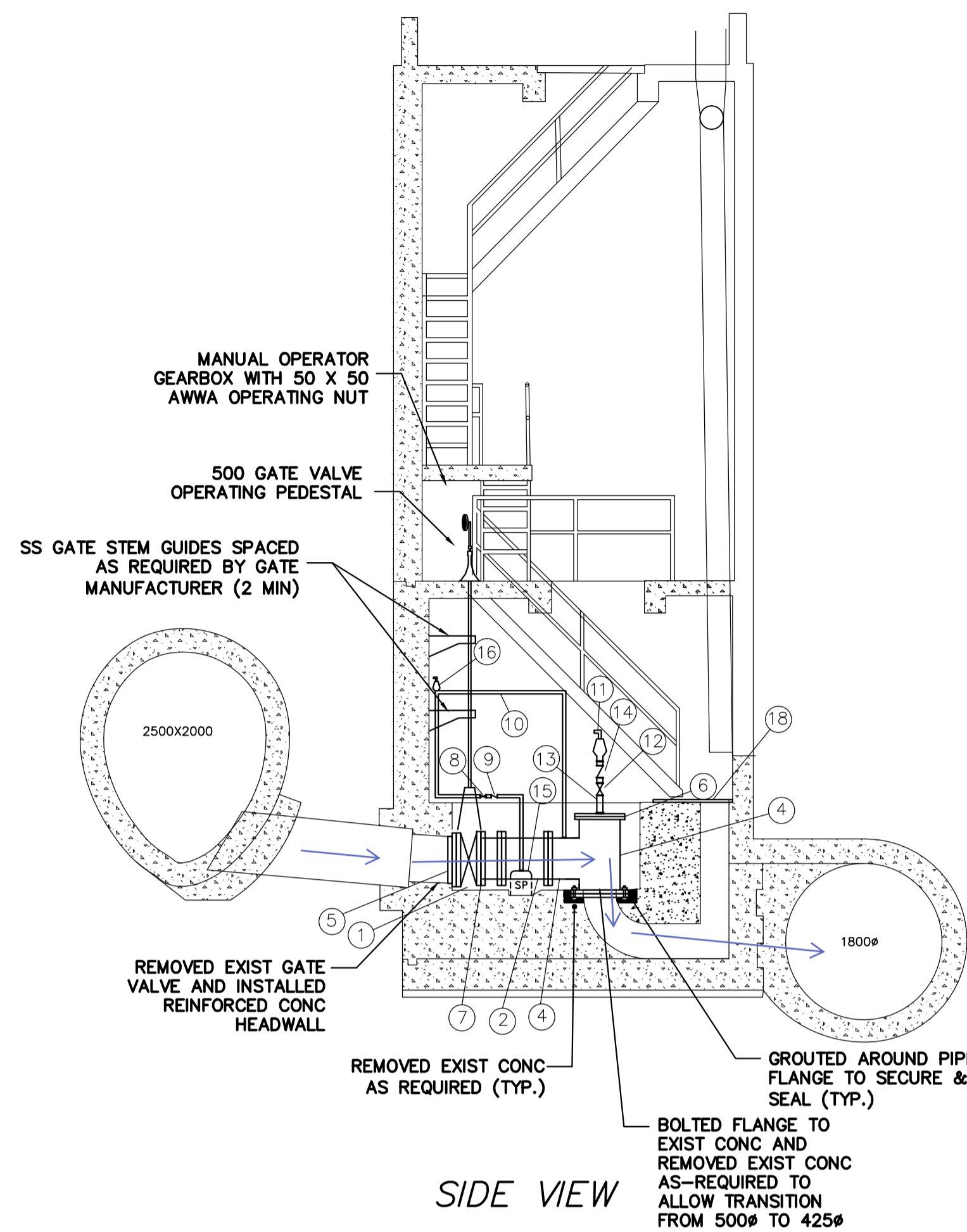
AS BUILT  
MAR. 1971 V.D.



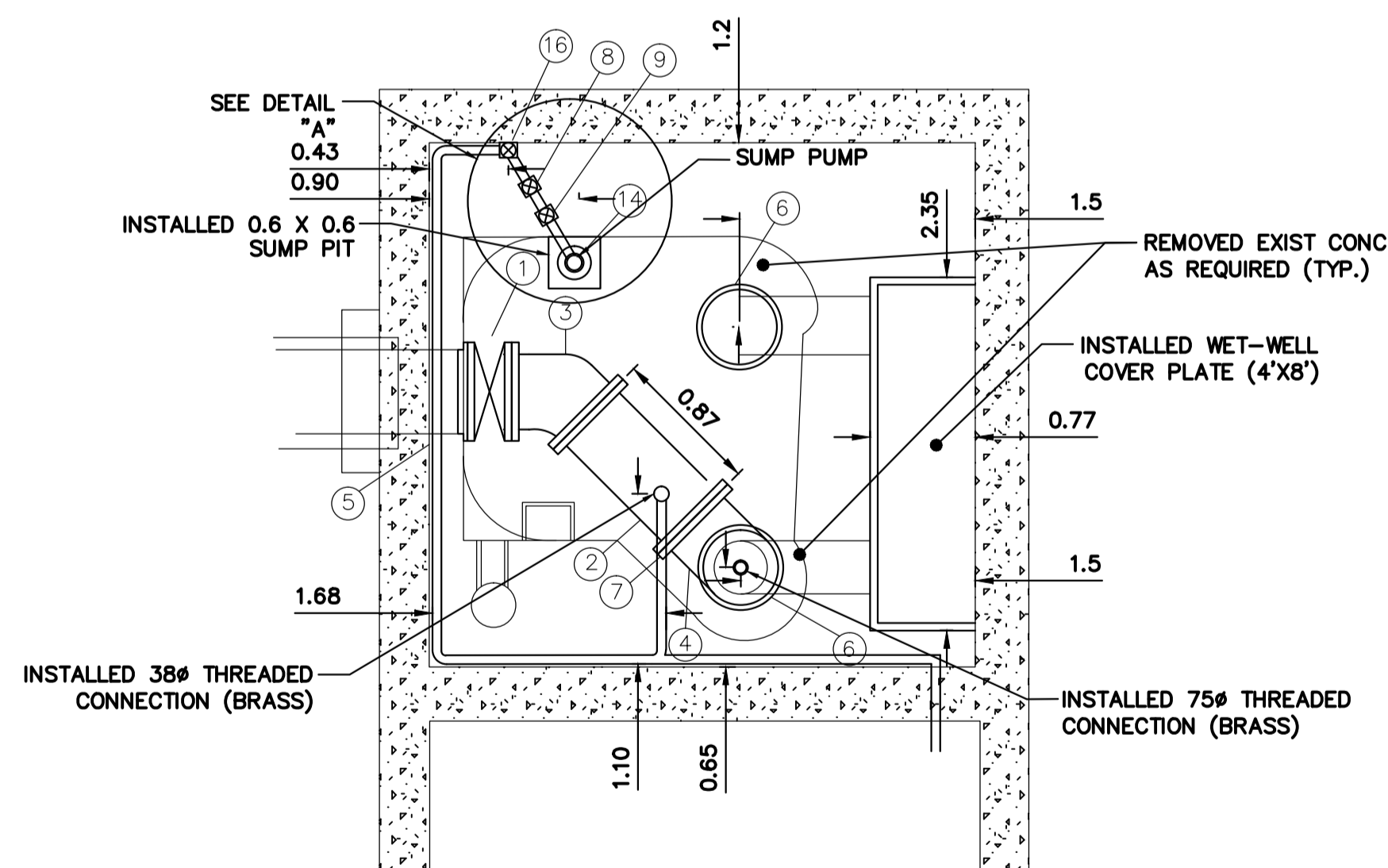
REVISIONS				THE METROPOLITAN CORPORATION OF GREATER WINNIPEG WATERWORKS & WASTE DISPOSAL DIVISION SEWAGE DISPOSAL BRANCH	
NO.	DESCRIPTION	DATE	BY		
1					
2					
3					
4					
5					
6					
7					
8					

APPROVED BY <i>[Signature]</i> CHIEF ENGINEER	DESIGNED BY <i>[Signature]</i> DATE MAR 1963	CHECKED BY <i>[Signature]</i> DATE MAR 1963	DRAWING NO. <b>445</b>
---	---	--	---------------------------

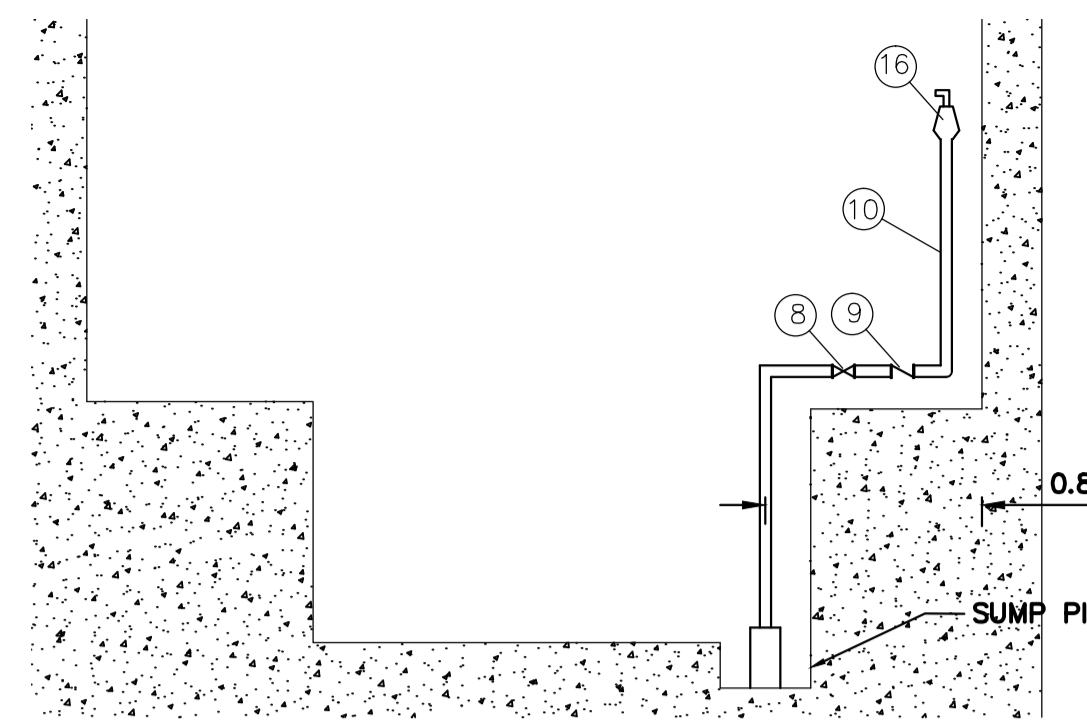


SIDE VIEW

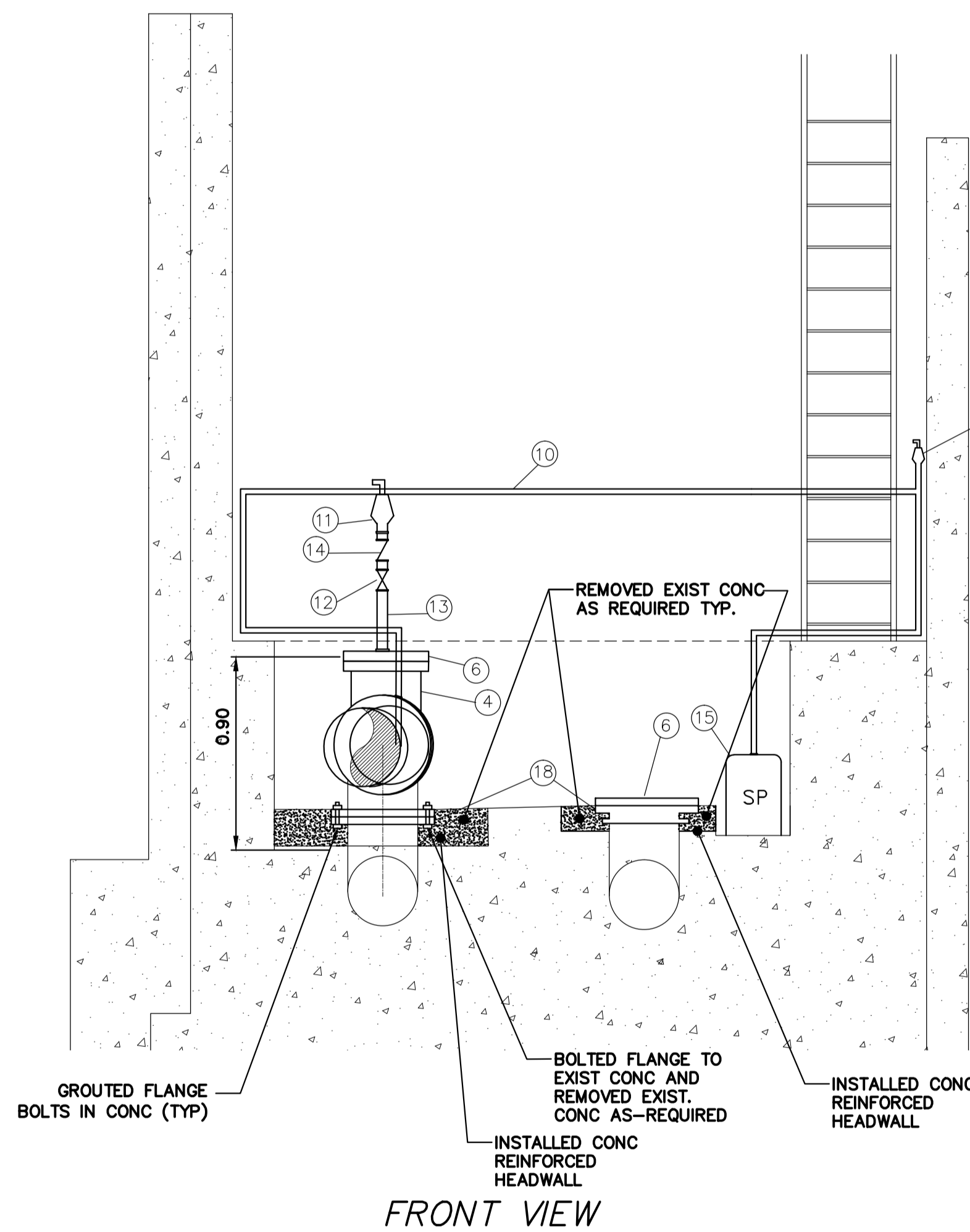


TOP VIEW

METRIC  
WHOLE NUMBERS INDICATE MILLIMETRES  
DECIMALIZED NUMBERS INDICATE METRES



DETAIL "A"



CONSTRUCTION NOTES:

1. ALLOWED SHUTDOWN TIME: MAX. 23.0 HRS OR AS DETERMINED BY COLLECTIONS STAFF
2. CRITICAL BASEMENT ELEVATION: 229.622
3. REMOVED EXISTING CONCRETE PIPING, VALVES, FITTINGS, AND OTHER MATERIALS AS REQUIRED. INSTALLED NEW PUMPS, MOTORS, PIPING, VALVES AND FITTINGS AS SHOWN.
4. PROVIDED TEMPORARY BY-PASS PUMPING OF WASTEWATER DURING CONSTRUCTION.
5. INSTALLED MECHANICAL WORKS AS INDICATED AND ACCORDING TO MANUFACTURER'S SPECIFICATIONS.
6. EXCAVATIONS BACKFILLED WITH CLASS 3 OR CLASS 5 BACKFILL IN ACCORDANCE WITH CW 2030 AND SD-002.
7. FLANGE NUTS & BOLTS ASTM A307.
8. GASKETS FULL FACED, 3 THICK RED RUBBER.
9. CONTRACTOR CONFIRMED ALL DIMENSIONS BEFORE ASSEMBLING PIPE.
10. ALL ANCHOR BOLTS ASTM A276 TYPE 316 SS.

MATERIALS							
SEWER							
ITEM	DESCRIPTION	MATERIAL	MANUFACTURER	END	LENGTH	QUANTITY	TYPE
1	*500Ø VALVE/ASSEMBLY			FL	3903±	1	
2	500Ø PIPE	CI		FL+PE	893±	1	
3	500Ø BEND	CI		FL		1	45.0°
4	500Ø TEE	CI		FL		1	
5	500Ø FLANGED WALL THIMBLE	DI				2	
6	500Ø BLIND FLANGE	DI				2	
7	500Ø UNI-FLANGE	DI				1	
8	38Ø GATE VALVE	CI		FL		1	
9	38Ø CHECK VALVE					1	
10	38Ø PIPE	ABS				1	316 SS PIPE
11	75Ø ONE WAY AIR VALVE					1	
12	75Ø GATE VALVE					1	
13	75Ø PIPE	ABS				1	316 SS PIPE
14	75Ø CHECK VALVE					1	
15	SUMP PUMP					1	110V, MIN 1/3 HP
16	38Ø ONE WAY AIR VALVE					1	
17	ALUMINUM DIAMOND PLATE					1	
18	500Ø PIPE FLANGE					1	

CONTRACTOR: ROCKY ROAD RECYCLING

NOTE:  
LENGTHS & DIMENSIONS SHOWN AS ± CONFIRMED BY CONTRACTOR  
\* ITEMS SUPPLIED BY CITY  
- CONTRACTOR SUPPLIED CABLES & CONDUIT FROM SUMP PUMPS TO ELECTRICAL OUTLETS IN COMMUNOTOR ROOM  
- VALVE PEDESTAL OPERATORS HAVE POSITION INDICATORS.

FOR INDEX SEE  
1-0110A-D0003-001

CONSTRUCTION COMPLETION  
DATE: 16/06/14

RECORD DRAWING  
WATER AND WASTE DEPARTMENT

B.M. ELEV.					ENGINEER'S SEAL	<p><b>THE CITY OF WINNIPEG</b> WATER AND WASTE DEPARTMENT ENGINEERING DIVISION</p>	<p>2015 COMMUNOTOR CHAMBER PIPING &amp; VALVE UPGRADES</p> <p><b>CONWAY LIFT STATION</b> CONWAY STREET &amp; PORTAGE AVENUE</p>	<p>SHEET 6 OF 12</p> <p>CITY DRAWING NUMBER</p> <p>1-0131L-M0001-001</p>
DESIGNED BY	NC	CHECKED BY	NC	ORIGINAL MYLAR SIGNED BY K.R. ZUREK 18/09/25				
DRAWN BY	RS	APPROVED BY	NC					
SCALE:		RELEASED FOR CONSTRUCTION			CONSULTANT DRAWING NUMBER			
HORIZONTAL	NTS	NEWTON CONTI						
VERTICAL	NTS							
NO.	REVISIONS	DATE	BY	DATE	DATE			
1	REVISED TO RECORD DRAWING	18/06/04	RS	2018 08 16	2015 09 15			

PLOT DATE: 2018 08 16

BID OPPORTUNITY: 822-2015

FILE PATH: R:\DRAWINGS\SEWER\1-0131L-M0001-001.dwg